

UC Merced 2020

UNIVERSITY OF CALIFORNIA
MERCED



The University of California, Merced is the newest campus in the University of California system



University of California, Berkeley
First Graduating Class, 1873



University of California, Merced
First Graduating Class, 2009

									
1869	1873	1919	1944	1959	1959	1964	1965	1965	2005

UC's impact can be felt almost every day

Almost all of the industries where California leads grew out of or has been enhanced by university-based research

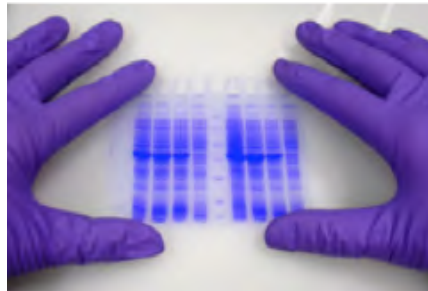


The University of California system teaches for California and provides research for the world

10 campuses, 5 medical centers, 3 national laboratories and Cooperative Extension embedded within 50 California counties



More patents than any other university (3900)



\$4.4 billion in research grants secured



An average of four inventions a day



61 Nobel Laureates - More than any other public university



Awards 7% of the nation's Ph.D. degrees



- 238,000 students
- 198,000 faculty and staff
- 1.7 million alumni
- \$46.3 billion contribution to California economy

The University of California has a legacy of responding to the state's needs to educate its young people

UC Irvine, 1965



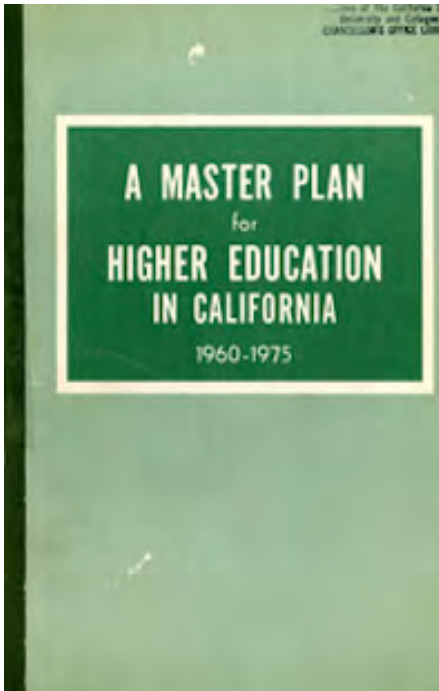
UC San Diego, 1960



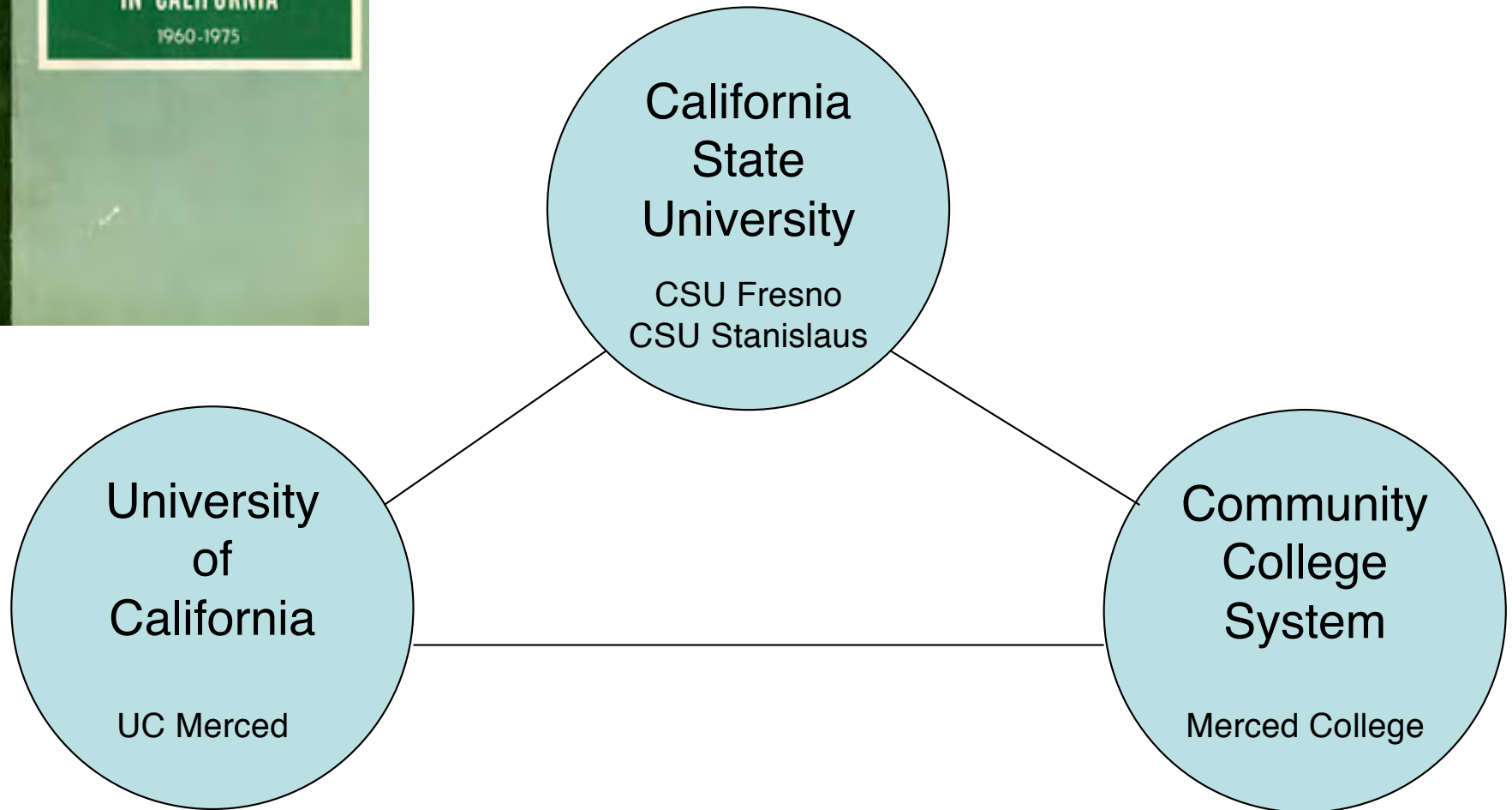
UC Santa Cruz, 1965



UC built three new campuses to respond to California's post-World War II baby boom

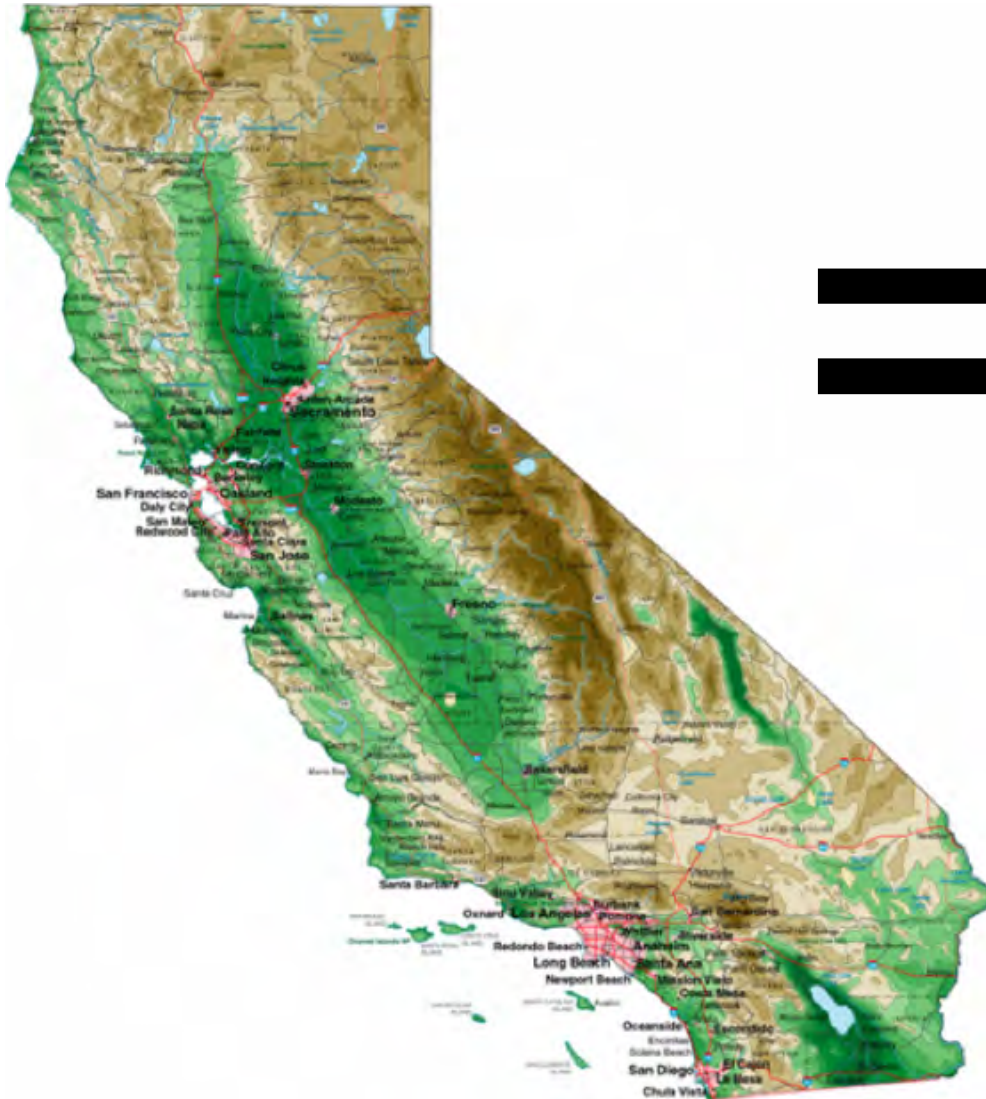


California Master Plan for Higher Education (1960)



California's Population Today

39 million people

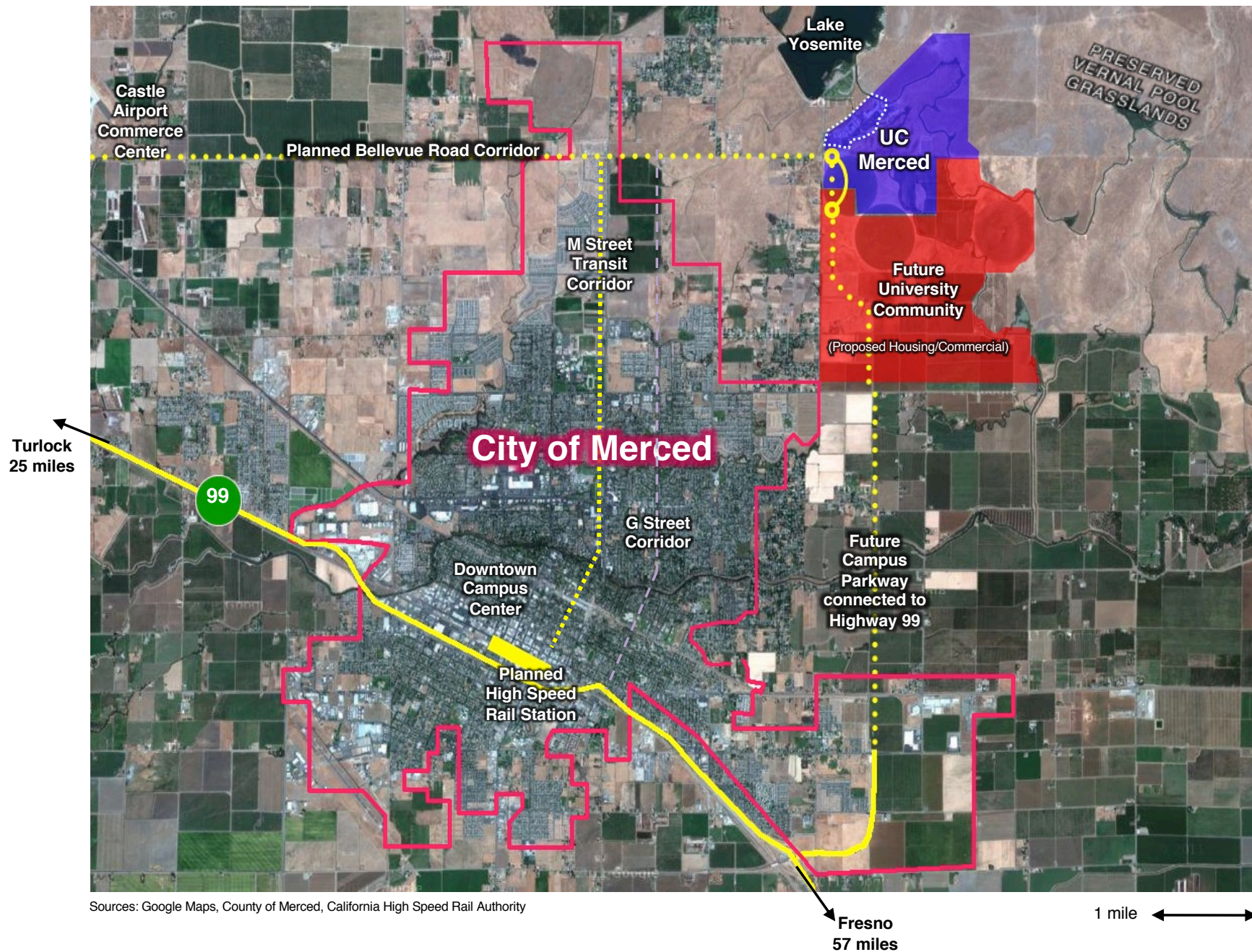


Connecticut - 3,483,372
Iowa - 2,944,062
Mississippi - 2,881,281
Arkansas - 2,725,714
Kansas - 2,723,507
Utah - 2,351,467
Nevada - 2,241,154
New Mexico - 1,874,614
West Virginia - 1,810,354
Nebraska - 1,739,291
Idaho - 1,366,332
Maine - 1,305,728
New Hampshire - 1,287,687
Hawaii - 1,257,608
Rhode Island - 1,076,164
Montana - 917,621
Delaware - 817,491
South Dakota - 764,309
Alaska - 648,818
North Dakota - 633,837
Vermont - 619,107
Washington, DC - 563,384
Wyoming - 501,242

UC Merced is located in California's fast-growing San Joaquin Valley

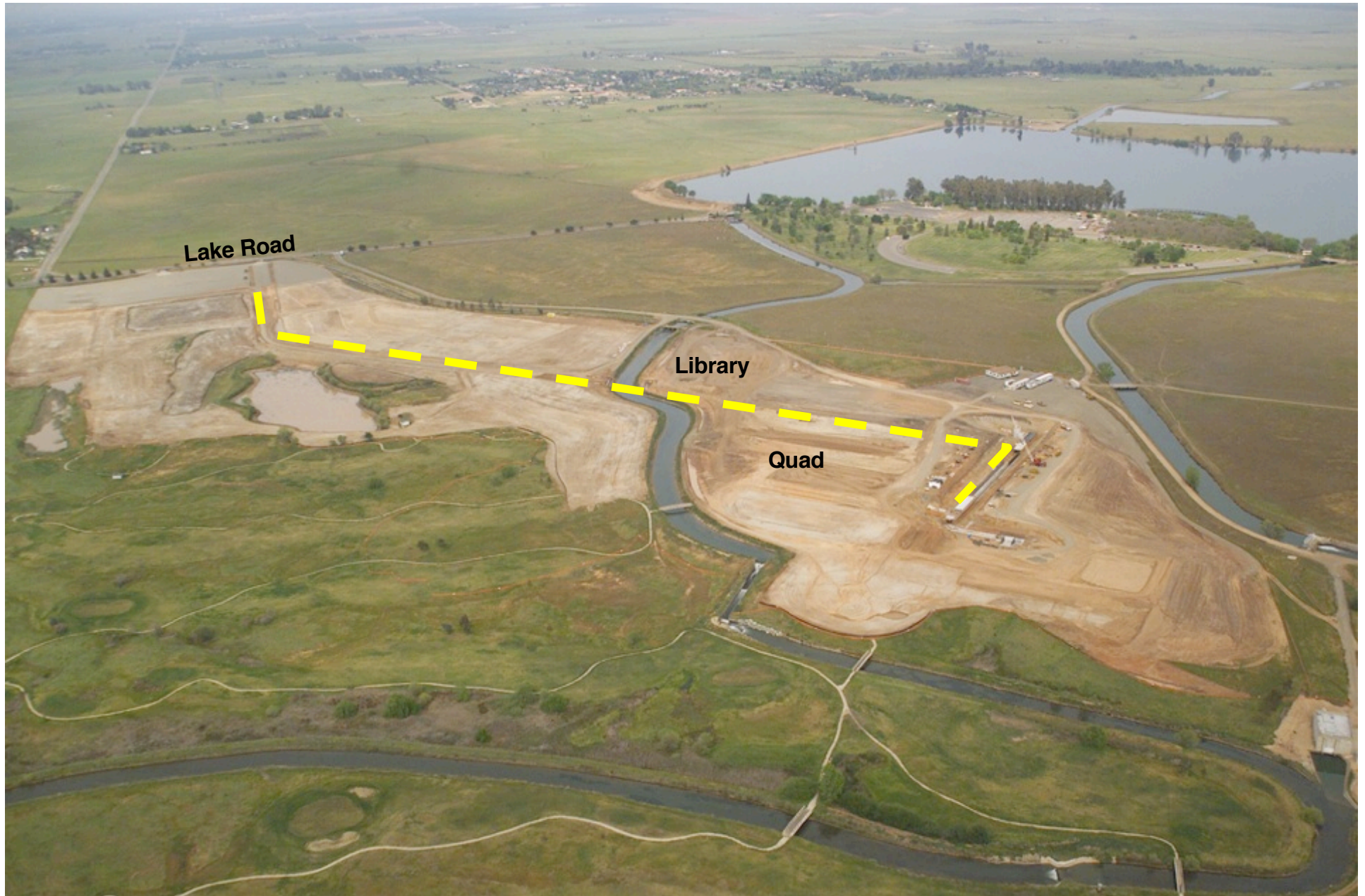


The campus is located just outside the city limits of Merced



Initial infrastructure Spine

February 2003



UC Merced has grown since opening in 2005

1.4 million square feet of teaching, research
and student life facilities



- Virtually every building is certified LEED Gold or Platinum
- 'Triple zero' energy, emissions and waste commitment

UC Merced also includes multiple leased and owned off-campus facilities in Merced, Fresno, Yosemite National Park, and the Sierra



Venture Lab
Downtown Merced



Downtown Merced



Sierra Nevada Research Institute
Yosemite National Park



Fresno Center



Castle Research Center
Castle Airport, Merced



Promenade Office Park
North Merced

Our students are diverse, Californian and first generation Campus has grown to 7,900 students

71% are among the first in their families to attend a four-year university



55% majoring in science, technology engineering and math

99% of undergraduates are Californian



- **7,375 Undergraduates (Fall 2017)**
 - *28% from San Joaquin Valley*
 - *25% from Los Angeles County*
 - *22% from the Bay Area*
- **592 Graduate Students (Fall 2017)**

**UC Merced has approximately 8,000 alumni
who are now in California's workforce**



RECENT EMPLOYERS WHO HAVE HIRED UC MERCED GRADUATES

- Agilent Technologies
- Apple
- Bayer
- Boeing
- California State Assembly
- Chevron
- E. & J. Gallo Winery
- eBay
- ESPN
- Facebook
- Federal Bureau of Investigation
- Frito-Lay
- Genentech
- Google
- Hilmar Cheese Co.
- Intel
- Kaiser Permanente
- Lawrence Livermore National Laboratory
- Microsoft
- NASA
- National Parks Service
- Pacific Gas and Electric Co.
- Paypal Inc.
- Peace Corps
- Raytheon
- Teach for America
- Tesla Motors
- Twitter
- Yosemite National Park
- YouTube

The Merced 2020 campus expansion is designed to enhance the teaching and research capacity of the University of California, Merced



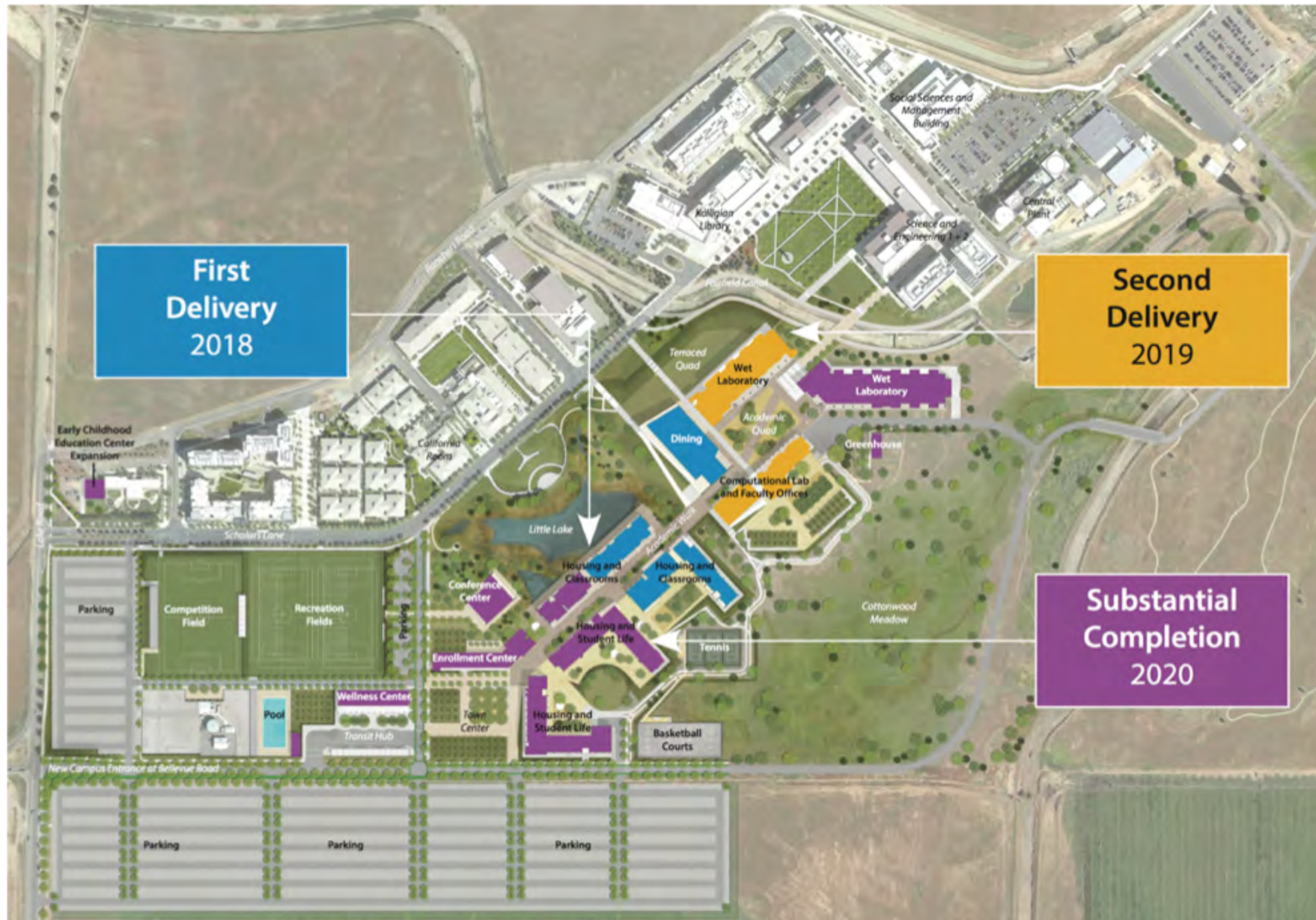
University of California, Merced
2020 Project Master Plan

1.2 million gross square feet

Research Laboratories,
Classrooms, Student
Housing, Student Life
Facilities and Infrastructure

Broke ground in October
2016

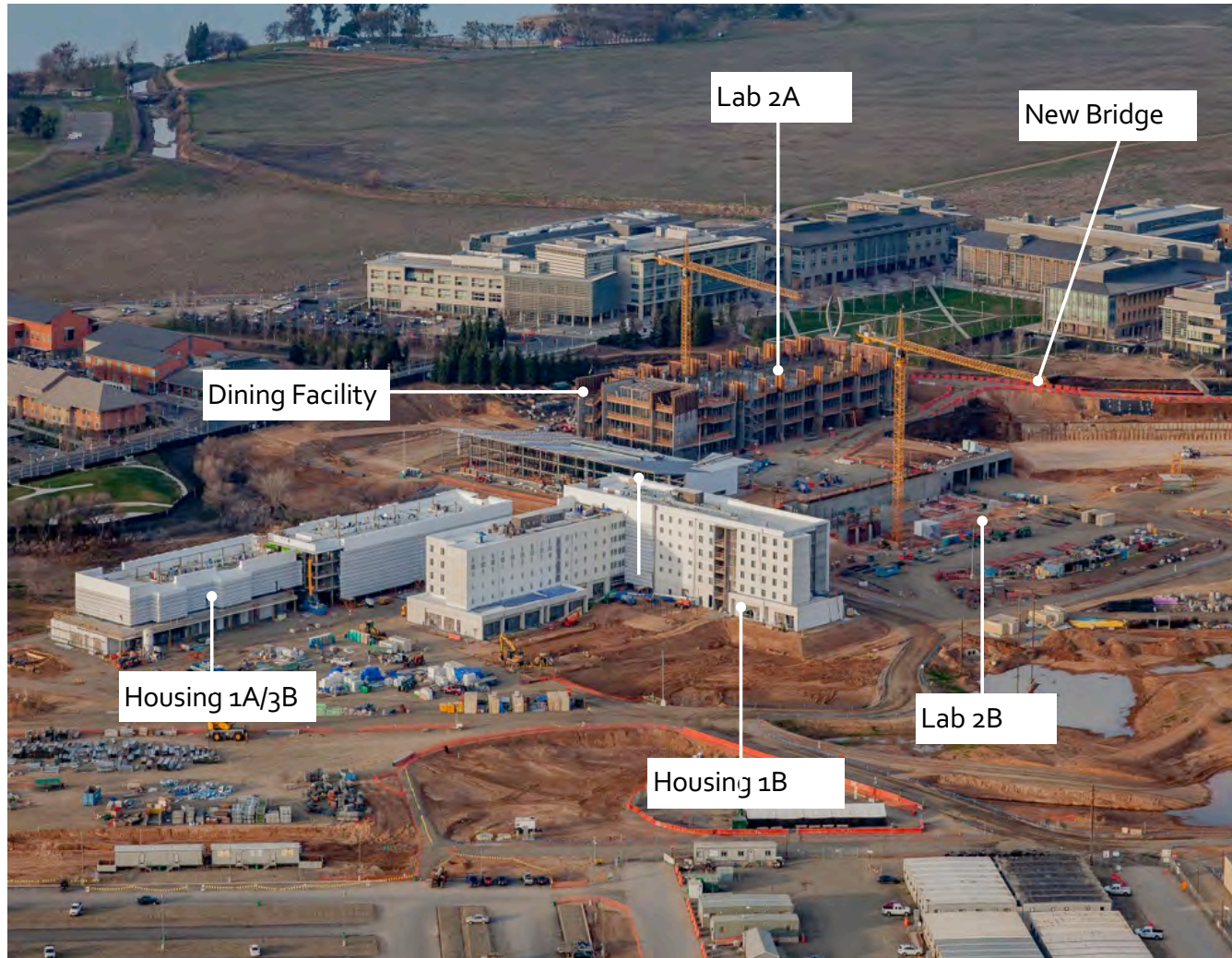
Merced 2020 is one of America's largest higher education expansion projects
Three phase delivery sequence and \$1.3 billion design and construction value



The campus will double in size
February 2018 Aerial View



13 buildings are under simultaneous design and construction



Up to 400 construction workers are on site each day

February 2018

\$440 million has been invested to date
30% complete



February 2018

Features a compact land use plan and open space



Mixed-use student housing with ground floor classrooms



State-of-the-art research facilities and conference rooms



Largest expansion of its kind in North America

- Capacity for 10,000 students
- Energy efficient and LEED Gold minimum
- Long-term, performance-based maintenance structure

**Residential buildings timed to enable
continued enrollment growth**



Central Dining Pavilion

Outdoor
Seating

Main
Entrance





Video Link: <http://merced2020.ucmerced.edu/buildingthefuture>



Richard Cummings
rcummings2@ucmerced.edu

Website
merced2020.ucmerced.edu

Twitter/Instagram
[@merced2020](https://twitter.com/merced2020)

UNIVERSITY OF CALIFORNIA
MERCED