

# VISION & CHANGE ALIGNMENT MAP

## VISION

- CHANGE PATHWAYS
- HIRING & SUPPORTING THE BEST FACULTY
- RECRUITING & SUPPORTING TALENTED STUDENTS
- ENGAGING EXCEPTIONAL STAFF
- MODERNIZING SYSTEMS & PROCESSES
- 2020 & SPACE PLANNING

### GUIDELINES

For Project Priorities

Does it Impact...

RESEARCH EXCELLENCE?

ACADEMIC DISTINCTION?

STUDENT SUCCESS?

SERVICES & SUPPORT?

PROFESSIONAL DEVELOPMENT?

ORGANIZATIONAL SUSTAINABILITY?

DIVERSITY & INCLUSION?

### 2017 PRIORITIES

- Computational Science & Data Analytics
- Sustainability
- Inequality, Power & Social Justice
- Adaptive & Functional Matter
- Entrepreneurship & Management
- Human Health Science
- Foundations

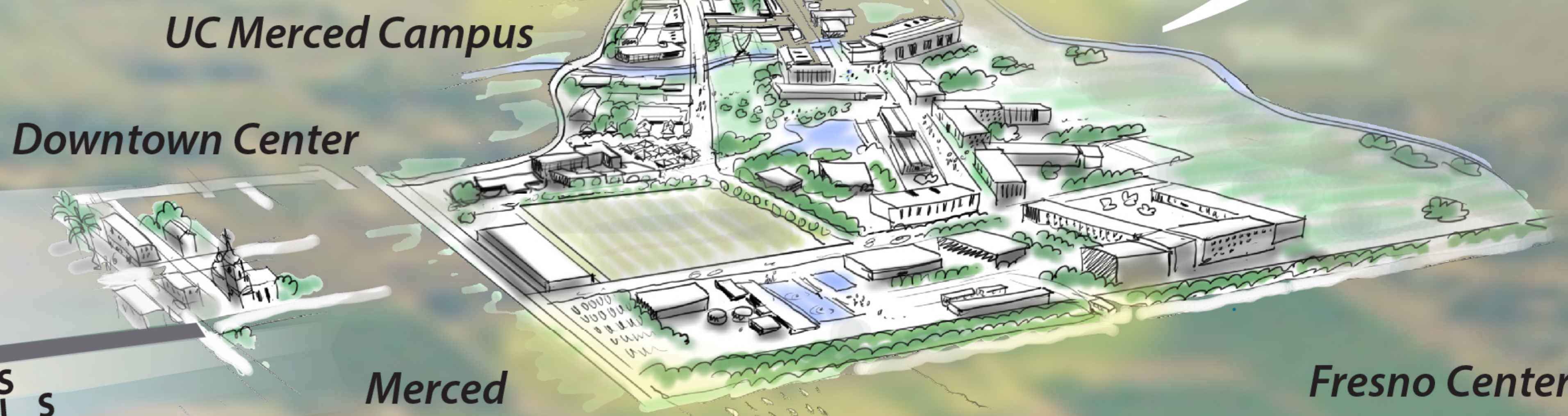
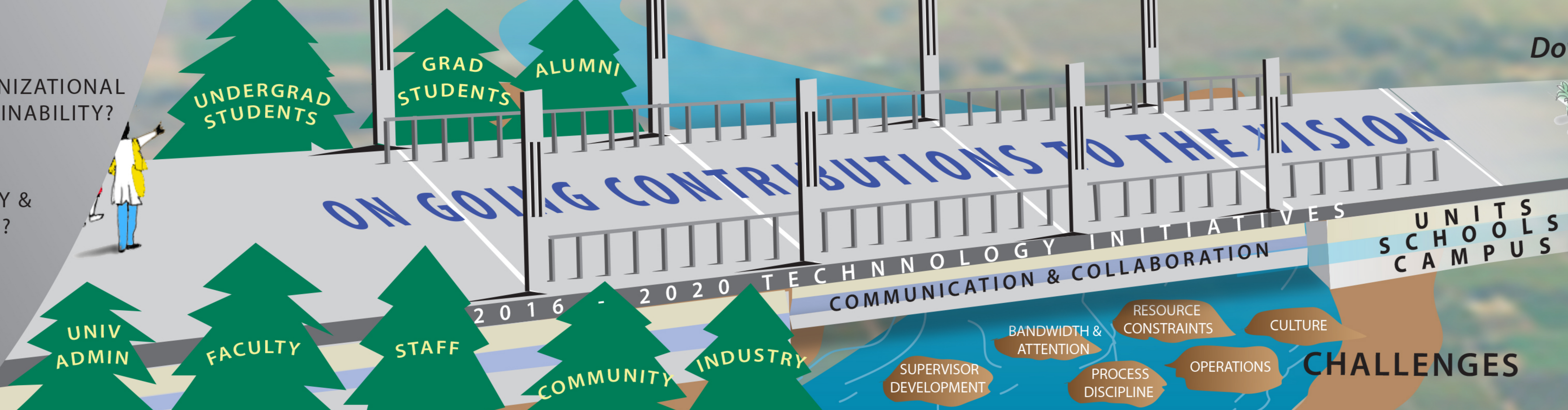
### NEW PRIORITIES SET ANNUALLY

- Expand Graduate Students
- Growing Enrollment
- Undergraduate General Education
- Performance Evaluation
- Merit/Equity Pay
- Professional Development
- Technology Improvements
- UC Path - payroll system
- Business Process Improvements
- Org Redesign
- 2020 Project
- Downtown Campus Center

**UC Merced**

- Culture of Inquiry, Discovery & Learning**
  - Active, Engaged Campus Community
  - Lifelong Learning
- Enriching the Valley**
  - Individuals, Families, and Communities
- Sustainable by Design**
  - Environment
  - Living Lab
  - Academic Distinction
  - Enduring Quality
- Partnering with the Emerging California**
  - Research Agenda
  - Water
  - Ag
  - New Tech
  - Healthcare
  - Workforce
- Leading in Creativity & Innovation**
  - Faculty
  - Students
  - Staff
  - National/International Model
- Engaging the Public in Scholarship & Creativity**
  - Community Involvement
  - Citizenship Education
  - Giving Back
- Excellence in Research**
  - Carnegie R1 Designation
  - Large scale, Center Grants
  - Natnl Academy Recog.
  - Ph.D. Placements
  - Integrating Arts, Humanities & Sciences
- Transformative Education**
  - Leadership
  - Social skills
  - Intellectual Disposition

### STAKE HOLDERS



### VALUES

- Academic Freedom
- Diversity
- Community
- Kindness
- Collaboration
- Stewardship