



### University of California, Merced Newest campus in UC system

University of California, Berkeley  
First Graduating Class, 1873

University of California, Merced  
First Graduating Class, 2009

Gold		Water		Baby Boom Tidal Wave				"Tidal Wave II"	
Berkeley	UCSF	UCLA	UCSB	UC DAVIS	UC RIVERSIDE	UC San Diego	UC Irvine	Santa Clara	UCMERCED
1869									
2005									
		1873		1919	1944	1959	1959	1964	1965

### The University of California System Teaching for California, Research for the World

More patents than any other university

\$4.4 billion in research funding

An average of four inventions a day

59 Nobel Laureates – More than any other public university

Awards 7% of the nation's Ph.D.'s

250,000 students  
19,000 faculty  
1.6 million alumni

### California Master Plan for Higher Education (1960)

A MASTER PLAN  
HIGHER EDUCATION  
IN CALIFORNIA  
1960-1970

University of California

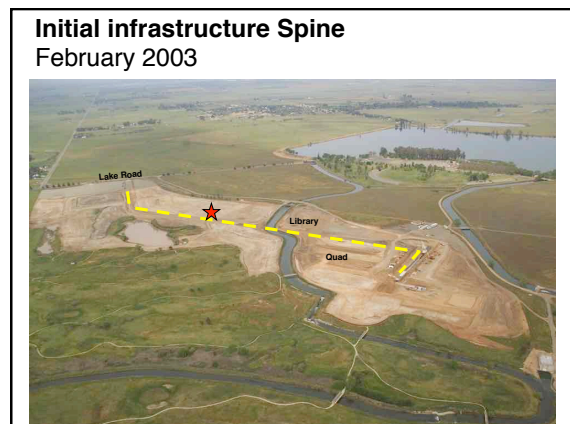
UC Merced

California State University

CSU Fresno  
CSU Stanislaus  
CSU Bakersfield

Community College System

Merced College



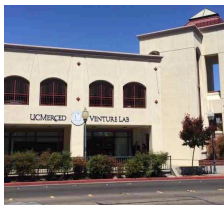


### Investing in our Urban Core UC Merced Downtown Center



- Located at 18th and N Street across from City Hall in Downtown Merced
- Construction began in Summer 2016
- Opens in 2017
- 370 staff

### Nurturing Knowledge-based economic activity UC Merced Venture Lab in Downtown Merced



- Located at W. 18<sup>th</sup> and M Street
- A collaborative effort located in Downtown Merced to promote entrepreneurship, enable technology transfer, and incubate new businesses



### Design and higher education

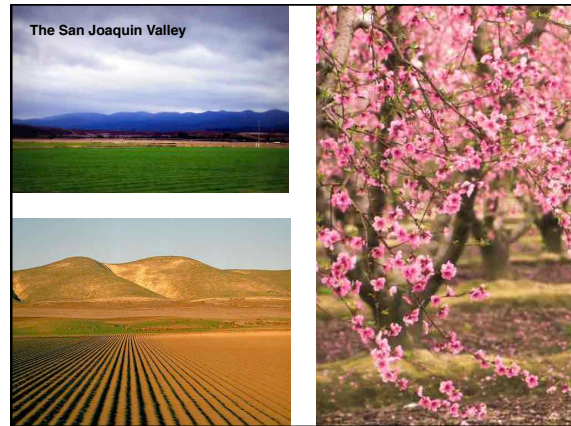


Ivy

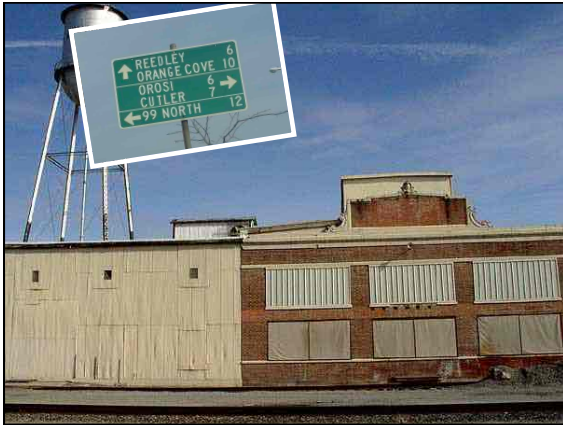


Mediterranean









Pacific Flyway, Los Banos



Stanislaus County



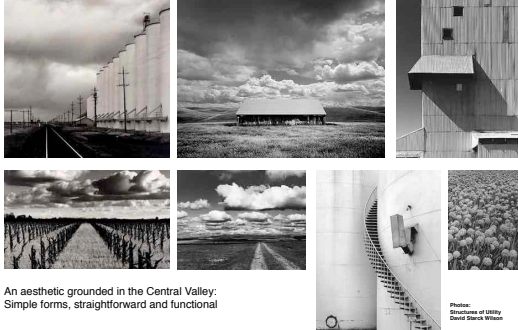
Downtown Merced



Exeter, California

### Architectural Regionalism and Social Sustainability

Integrates the climate, landscape and culture unique to a place



### Architectural Regionalism:

Integrates the climate, landscape and culture unique to a place



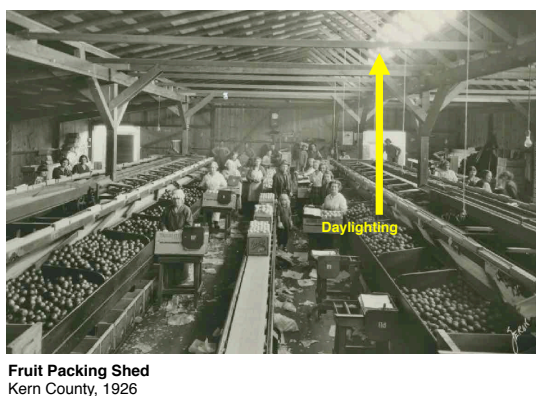
### Architectural Expression and Materials:

Glass, concrete, stucco and steel

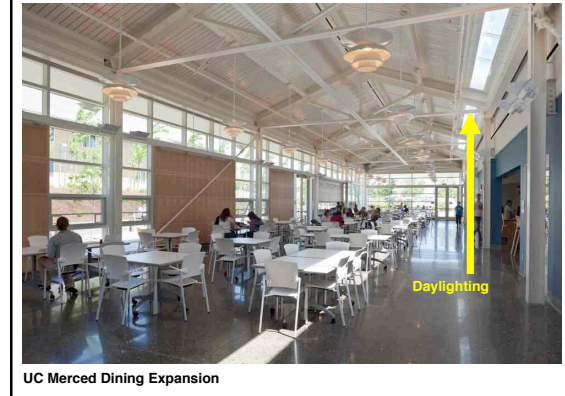


### The Summits Residence Hall

Strong Massing, Metal Siding, Functional Utility

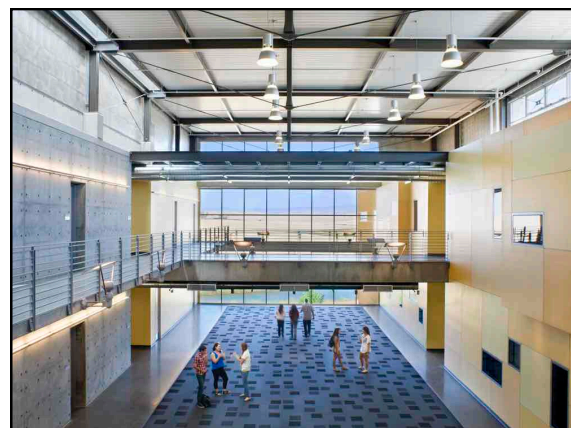
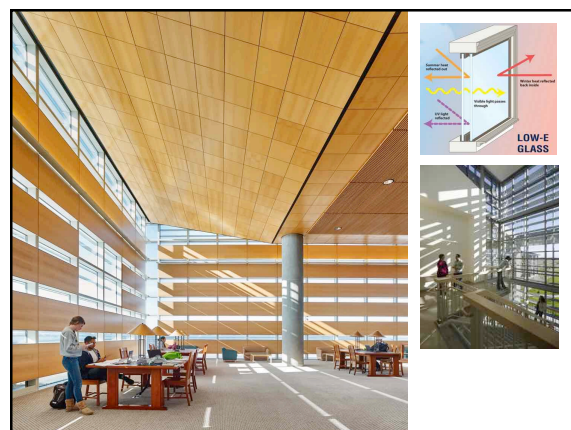
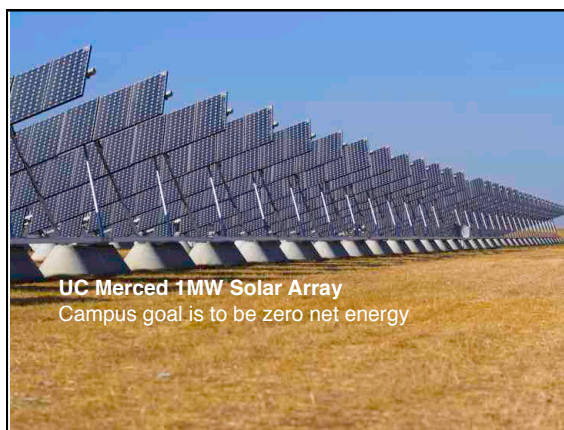
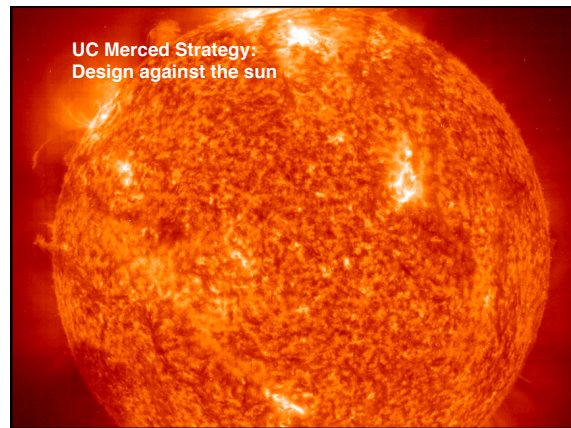
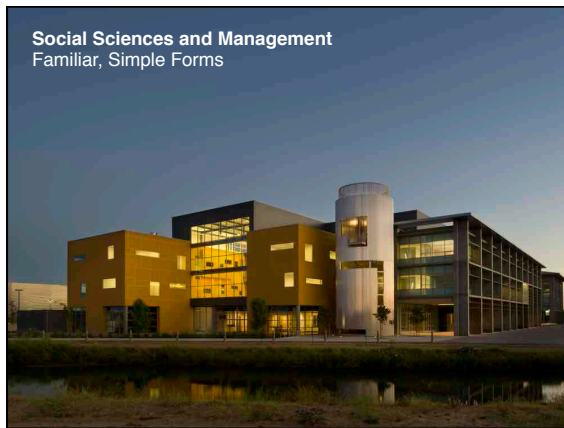


**Fruit Packing Shed**  
Kern County, 1926

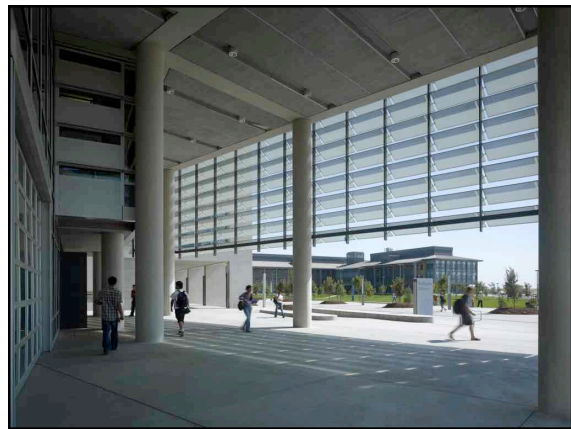
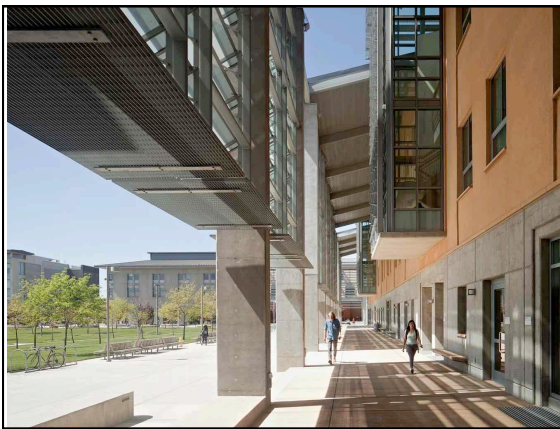
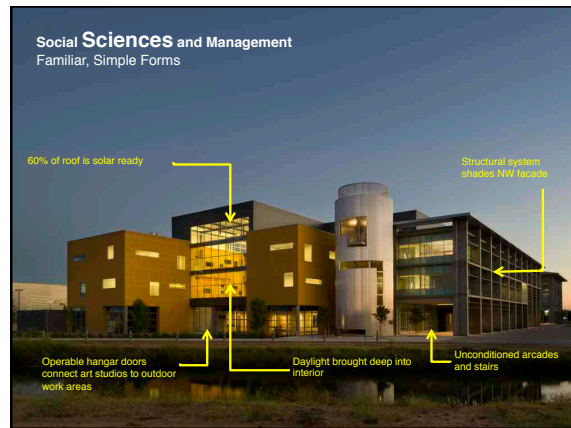


**UC Merced Dining Expansion**

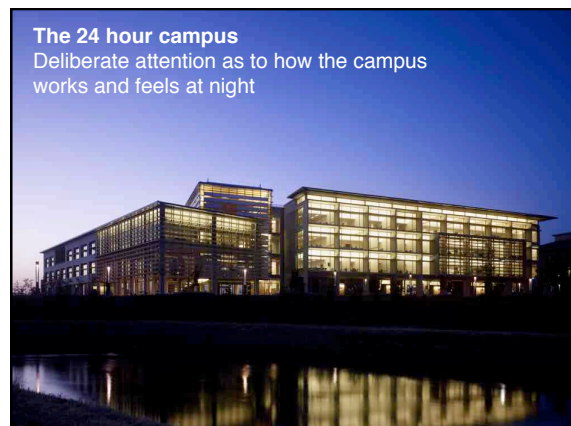
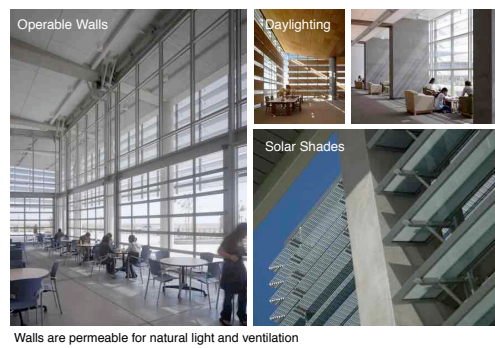




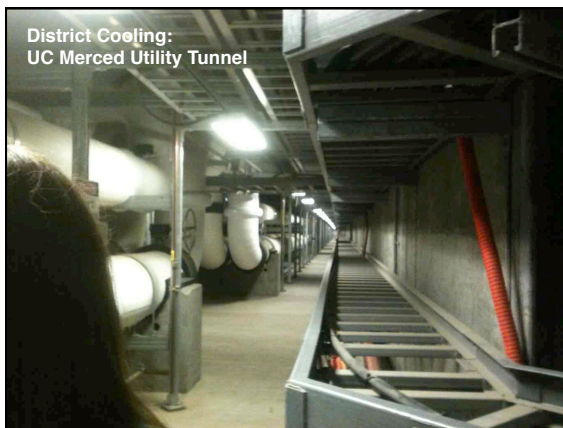
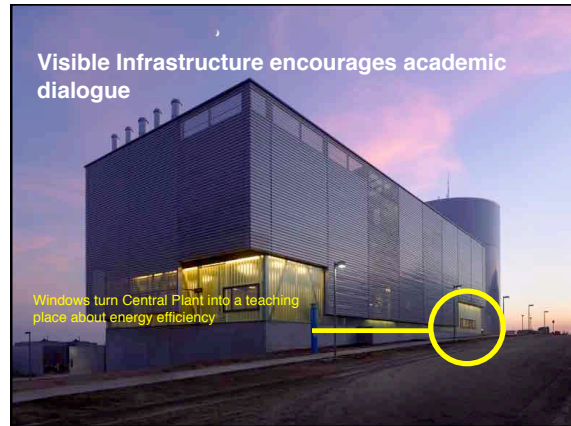
**One major influence:  
Bologna, Italy's 30 mile Arcade Network**



**Architectural choices act as teaching tool**







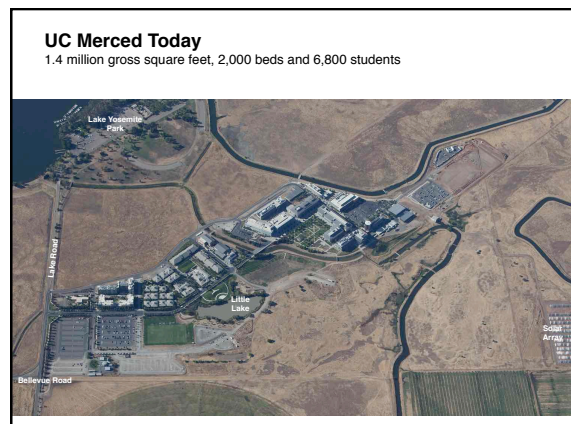
**UC Merced's near term goal is to expand campus facilities to enable growth to 10,000 students**

**A venue for social mobility** reflecting the diversity of California's next generation

**Global and national research** distinction in unique, targeted areas

**A proven catalyst for economic diversification** in the San Joaquin Valley

47





**The Project will almost double campus physical capacity**  
 1.2 million gross square feet addition, 1,700 new beds  
 Enables enrollment growth to 10,000 students  
 \$1.3 billion design and construction budget  
 Jointly funded by public and private funds

**First Public/Private Partnership of its kind in U.S.**  
 Largest Social Infrastructure Public/Private Partnership ("P3") in US  
 Largest Higher Education Public/Private Partnership in US

<p>Campus Lead <b>UCMERCED</b></p> <p>Project Management Support <b>WT PARTNERSHIP</b></p> <p>Design Management Support <b>WOODS BAGOT</b></p> <p>Infrastructure Support <b>AECOM</b></p> <p><b>Campus Team</b></p>	<p><b>Plenary</b> Properties Merced</p> <p>Equity Partner: Plenary Group Ltd.              Lead Contractor: Webcor Builders LP              Lead Campus Planner: SOM              Operations and Maintenance: Johnson Controls              Research Laboratory Architect: SOM              Academic Classroom Architect: WRNS Studio              Student Life Facility Architect: HOK              Student Housing Architect: Page Southerland Page              Infrastructure and Engineering: Arup North America</p> <p><b>Private Development Consortium</b></p>
---	--

**First buildings complete by 2018, Final delivery in 2020**  
 Groundbreaking: October 14, 2016

**Little Lake will be framed as the social heart of the campus**

**2020 Project facilities are physically integrated with existing campus buildings**

Physical Capacity for 10,000 students

- Teaching
- Research
- Residential
- Student Life

**New "Academic Quad" gives form to the Research Enterprise**

Northwest view of low-water landscaped Academic Quad

New faculty offices, classrooms and research labs are arranged around new quadrangle adjacent to the existing campus

### New "Academic Walk" will be the Central Connective and Pedestrian Circulation Feature



Mixed-use corridor programmed with classrooms on the ground floors and 1,700 student beds on the upper levels

### Online Resources

2020 Project website  
<http://merced2020.ucmerced.edu>

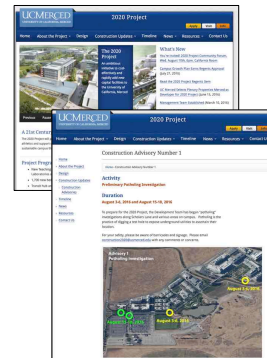
- Program Details
- Maps
- Latest News
- Contact information

Construction Team email  
[construction2020@ucmerced.edu](mailto:construction2020@ucmerced.edu)

#### Social Media

Instagram  
 @ucmerced2020construction

Twitter  
 @UCMerced\_2020



56

### Significant economic impact on the San Joaquin Valley



\$1.9 billion of one-time economic impact in the San Joaquin Valley

Developer has committed to benefit the community and the region.

- Contractors are required to employ a set percentage of apprentices from local, state-approved, joint labor-management apprenticeship programs
- Prevailing wage requirement
- Small Business requirements

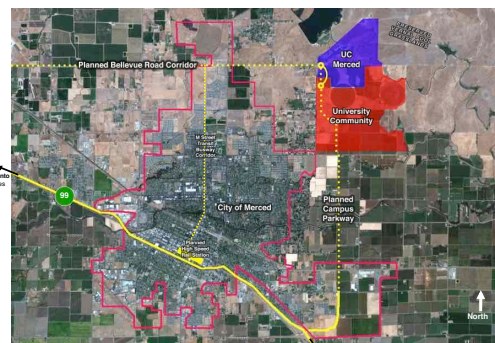
57



<http://2020project.ucmerced.edu>

2020 Project - Master Plan

### Local Context: 5 miles from downtown Merced



Source: Google Maps, County of Merced, California High-Speed Rail Authority