

UNIVERSITY OF CALIFORNIA, MERCED ENVIRONMENTAL PLANNING UPDATE

ENVIRONMENTAL STEWARDSHIP AND THE 2020 PROJECT



Physical and Environmental Planning
University of California, Merced
5200 N. Lake Road
Merced, CA 95343

<http://opb.ucmerced.edu/pep>

An overview of:

- 2020 Project Environmental Stewardship
 - Comprehensive conservation strategy to preserve and enhance environmentally sensitive vernal pools and grasslands in the Central Valley Region
 - Opportunity for educational learning and observation of conservation strategies such as wetland restoration, enhancement and preservation
 - Related academic research opportunities
-

ENVIRONMENTAL LEADERSHIP FOR A 21ST CENTURY CAMPUS

University of California, Merced | Green from the Ground Up

A Research University for the 21st Century

Since opening in 2005, the University of California, Merced has established itself as a critical element of California's commitment to provide access to higher education and research opportunities.

Due to its success, UC Merced will double the physical capacity of the campus by 2020 in order to accommodate long-term enrollment growth to 10,000 students.

UC Merced's growth strategy is to adopt a compact, high-density development pattern that will reduce the amount of land originally contemplated for the campus' next phase of growth.

A Sustainability Opportunity for 2020

The 2020 Project will add significant amounts of teaching, research and student life space to the campus.

By design, the development process is committed to expanding access to the University in a way that minimizes impacts to the natural and built environment, encourages compact land development, and provides immediate and long-term environmental benefits to the campus and the community for decades to come.

This brochure provides an overview of the ongoing preparation for campus expansion, the steps being taken to fulfill - and exceed - UC Merced's environmental commitments and the emerging opportunities to advance UC Merced's teaching, research and public service mission.

UC MERCED ENVIRONMENTAL LEADERSHIP FACTS

- More than 25,000 acres of unique grasslands already placed under permanent conservation easements
- Virtually every campus building certified LEED Gold or higher
- Comprehensive environmental mitigation program that sets an example for large-scale development
- Development area for the next phase of campus expansion has been reduced by 38%
- Mixed-use, high-density and sustainable development program on a 219-acre site



<http://opb.ucmerced.edu/pep>

A Continuing Legacy of Resource Stewardship

UC Merced has already helped to save more than 39 square miles of vernal pool habitat

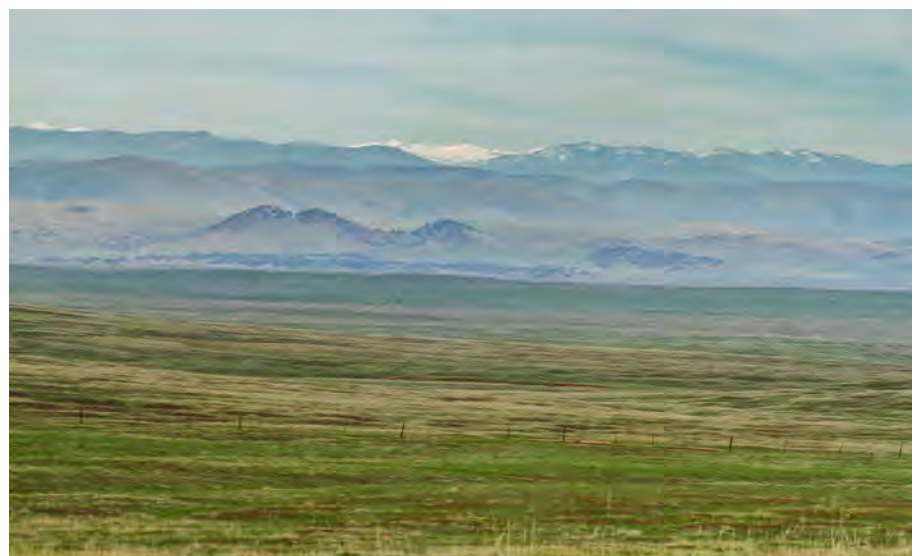
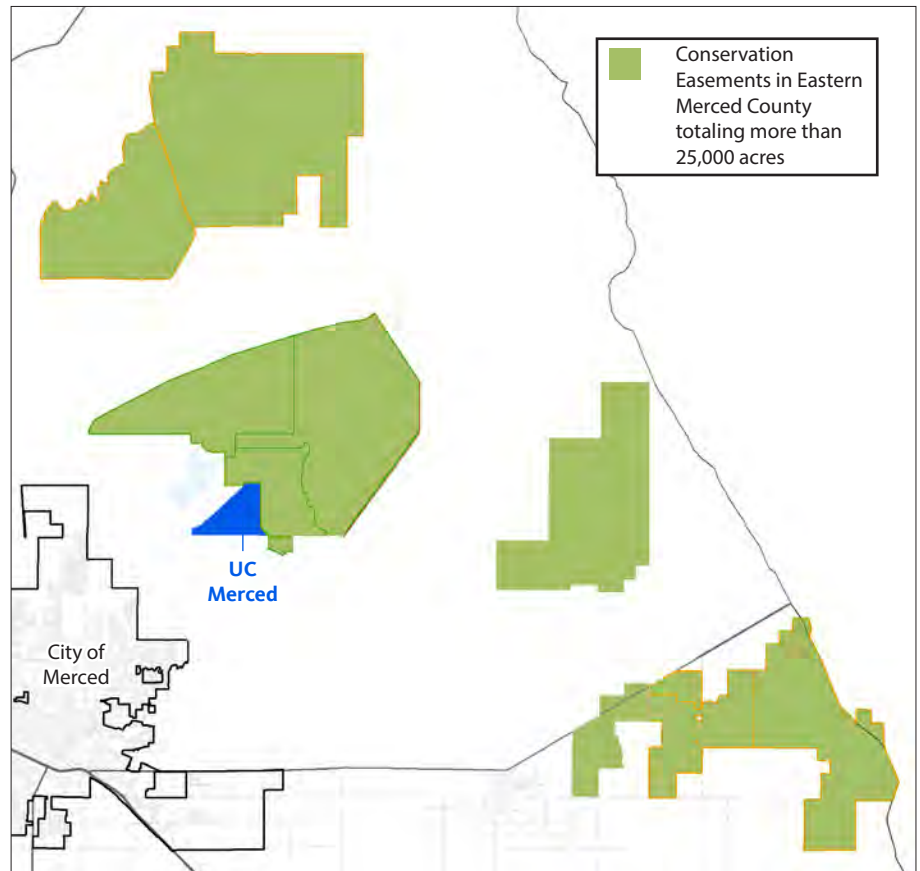
The grasslands of eastern Merced County contain seasonal vernal pools, a part of California's natural history where certain native plant and wildlife species thrive.

Many of these dense vernal pool complexes remain undisturbed in the eastern part of the county and are located on privately-owned cattle ranches.

In 1999, \$30 million was appropriated by the State of California legislature to fund the acquisition of conservation easements in eastern Merced County to mitigate for the development of the UC Merced campus and to support regional conservation efforts.

As a result, the University of California, in cooperation with the California Department of Fish and Wildlife, the California Wildlife Conservation Board, and the David and Lucile Packard Foundation embarked on a program to secure the permanent protection and preservation of large tracts of land containing a concentration of vernal pools and related aquatic habitats in the vicinity of UC Merced. Such acquisitions have assured the preservation, in perpetuity, of their ecosystems and habitats as well as the species that depend on them. This program enabled the preservation of more than 25,000 acres of unique grassland resources.

Development of the 2020 Project will impact a small amount of existing vernal pool and seasonal wetlands. Wetlands fill required for the 2020 Project will be fully mitigated by wetland restoration and conservation of land located within the Central Valley region.



Eastern Merced County

Regulatory Approvals and Entitlements

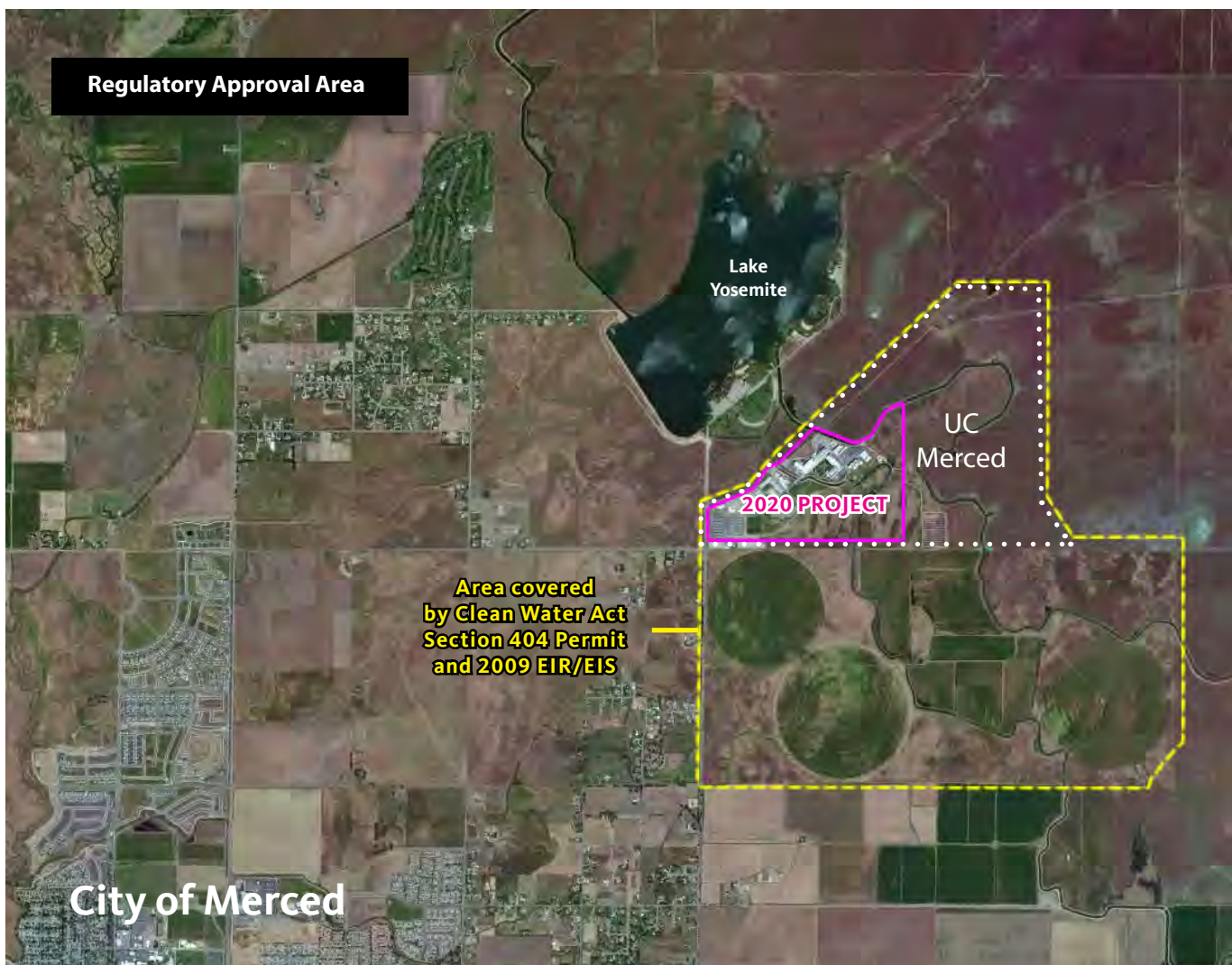
Section 404 permit granted and EIS/EIR adopted in 2009 after significant consultation with state and federal agencies

As the first new UC campus since 1965, UC Merced is the first UC campus to be built since comprehensive state and federal environmental laws were adopted. In March 2009, the campus received a Section 404 permit under the Clean Water Act of 1972 from the U.S. Army Corps of Engineers to fill 78 acres of wetlands habitat in order to develop its entire campus, including the 'University Community North'.

The University agreed to compensate for the loss of wetlands for the ultimate construction of a 25,000 student campus, as well as the development of housing, commercial and office space just south of the campus by restoring and preserving comparable wetlands in the region.

The Section 404 permit and the related Environmental Impact Report/Environmental Impact Statement (EIR/EIS) entitle the University, subject to mitigation measures, to develop a campus with 6.25 million square feet of academic buildings and housing for 12,500. For development adjacent to the campus, the Section permit and EIR/EIS entitle the development of 705,000 square feet of mixed use retail and offices; 2,308,000 square feet of research and development space; 49 acres of housing, and 5,200 housing units.

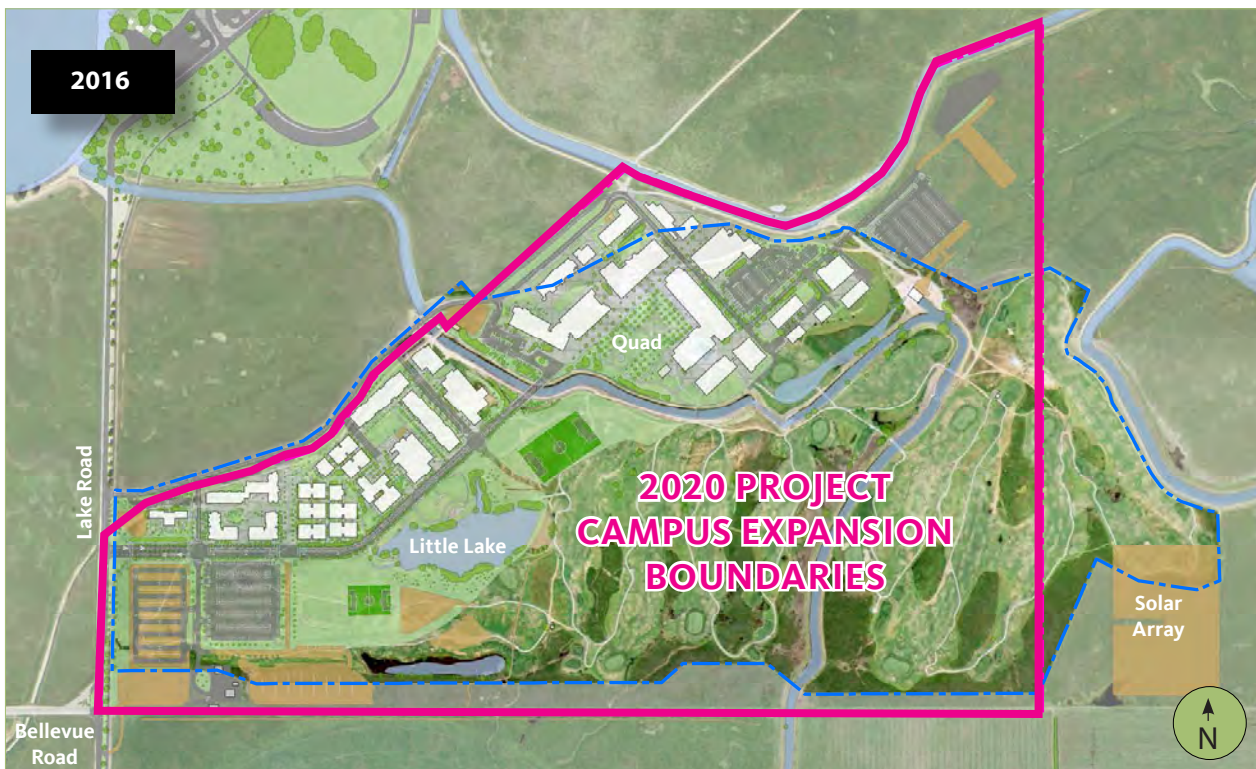
The University is required to provide mitigation for wetlands removed for campus development. This includes restoration/creation and conservation of land located within the Central Valley region, endangered species mitigation and compliance with an associated Incidental Take Permit issued in 2011 by the California Department of Fish and Wildlife.



From Golf Course to Campus

Construction of the 2020 Project is located on the former golf course footprint

To avoid impacting natural resources, the current 104-acre UC Merced campus was built on the former Merced Hills Golf Course. The 2020 Project will add academic, residential, recreational and support facilities within the remaining portion of the golf course.



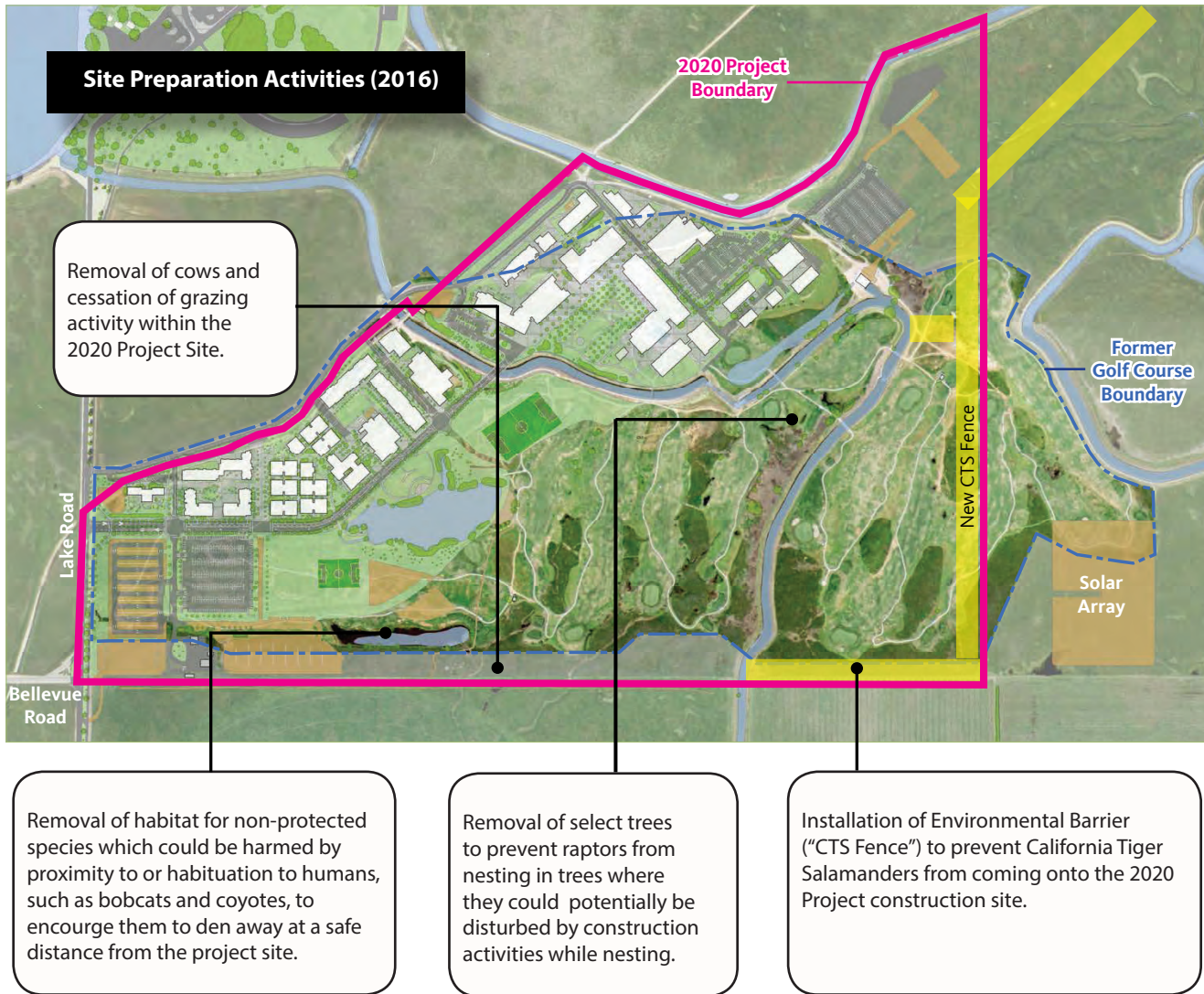
The former Merced Hills Golf Course operated from 1995 until 2002. The remaining landscaping features from the former golf course site are non-native. Due to the lack of irrigation, the non-native trees planted on the golf course are also in poor condition.

What's Happening in 2016

A look ahead at upcoming activity related to implementation of the 2020 Project

To implement the 2020 Project, initial steps are being taken to environmentally prepare the site for construction. Pre-site clearance activities have already commenced and will continue into early spring 2016.

When complete, the undeveloped portion of campus will transform into the 2020 Project construction area.



For more information on pre-site clearance activities, contact UC Merced Physical and Environmental Planning at (209) 228-4430.

A Sustainable Campus

As it grows, UC Merced will maintain its leadership role in demonstrating how to conserve resources.

UC Merced has created a long-range vision for a vibrant campus based on sustainable planning and design principles.

From energy-efficient buildings to waste-reduction strategies, UC Merced's leadership has received state, national and international recognition.

Going forward, the 2020 Project will build on that foundation as the campus adds new facilities.

The selection process for the 2020 Project development has incorporated consideration for proposals that include components advancing UC Merced's sustainability goals.



SUSTAINABILITY AND THE 2020 PROJECT

- LEED Gold minimums for buildings
 - Sustainability is a major evaluation criteria
 - Energy Budgets for development of each building
 - Water Budgets for the Project development
 - Daylighting requirements
 - Drought-resistant landscaping
 - Groundwater reduction targets
 - Biophilic design principles
 - Obligations to maintain major building systems - including those associated with sustainability and efficiency
-

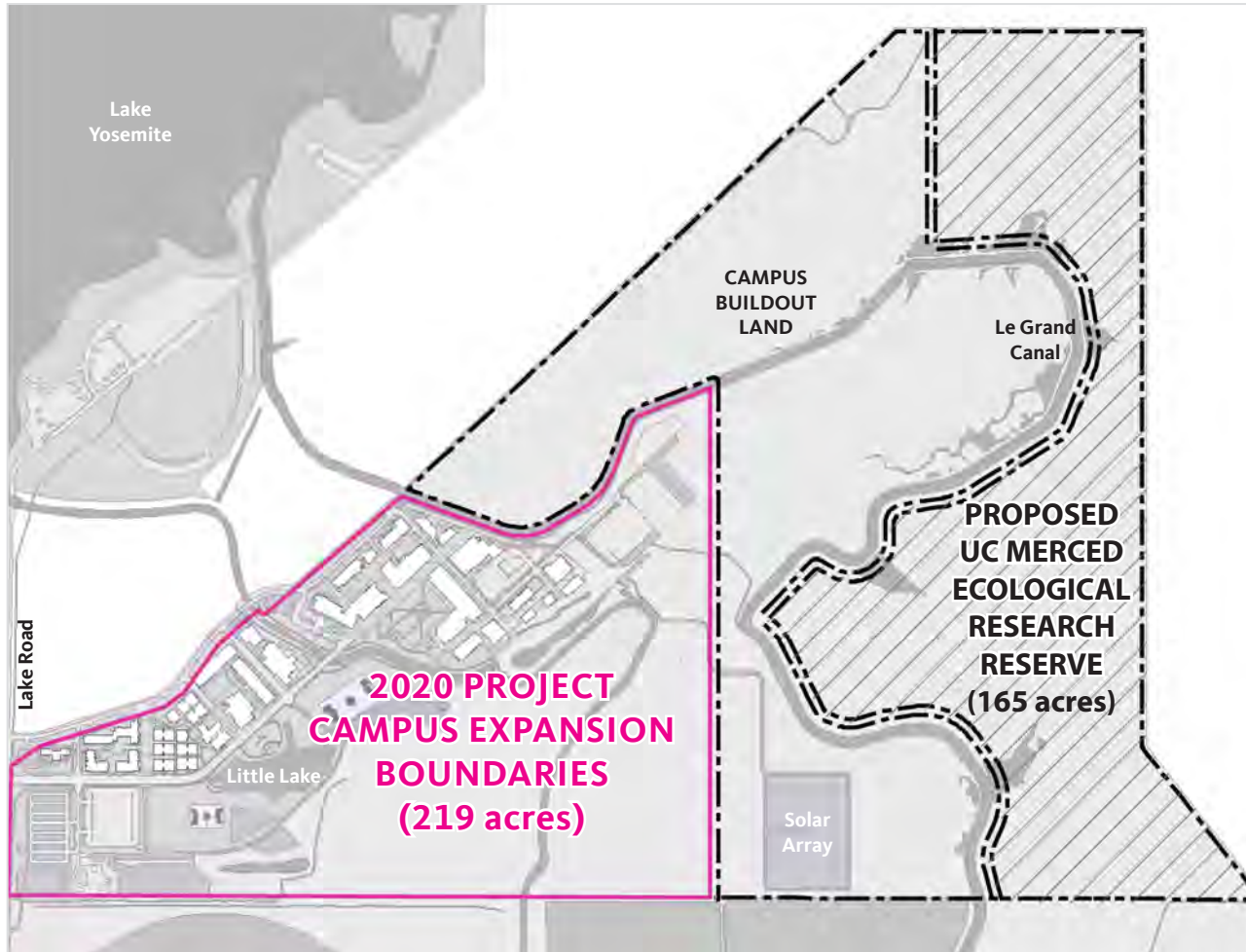


The 2020 Project's new facilities will be connected to UC Merced's existing energy efficient campus.

An emerging teaching and research opportunity

The UC Merced Ecological Research Reserve

Adjacent to the 2020 Project, UC Merced is studying the creation of a UC Merced Ecological Research Reserve which would provide mitigation for future phases of campus development beyond the 2020 Project. The Reserve would also provide faculty and students with an opportunity for hands-on teaching and research on the natural environment and to further advance the science of ecological restoration.



UC MERCED ECOLOGICAL RESEARCH RESERVE

- The UC Merced Ecological Research Reserve would be approximately 165 acres of campus land east of Le Grand Canal that is currently entitled for campus development.
- The site is strategically adjacent to the 6,560 acre UC Merced Vernal Pools and Grassland Reserve.
- Conservation easements placed on the Reserve will reduce impacts to vernal pool and seasonal wetlands.
- The reserve would avoid the filling of 6.79 acres of wetlands consisting of 3.23 acres of vernal pools and 3.56 acres of seasonal wetlands.
- The Reserve completes the University's comprehensive conservation strategy to preserve and enhance critically environmentally sensitive vernal pools and grasslands in the Central Valley region.
- Le Grand Canal would provide a natural ecological buffer from developed areas of the campus.
- There is a potential for restoration, enhancement and creation of additional vernal pools on the land.

Expanded Recreational Opportunities

Building connections to Lake Yosemite

In addition to the 2020 Project, UC Merced is fostering a partnership through a Memorandum of Understanding with Merced County that has the potential for regional impact. Lake Yosemite Regional Park is the crown jewel of Merced County's recreation system. Edged by a historic 486 acre freshwater reservoir, the 89 acre park has provided generations of Merced residents with access to water, relaxation and community.

In 2016, UC Merced entered into a Memorandum of Understanding with Merced County to partner together with the National Park Service and local stakeholders to develop and improve the recreational facilities of Lake Yosemite Park. The project will potentially include a network of trails providing direct pedestrian access to Lake Yosemite from the campus and development of shared recreational facilities between the UC Merced campus and Lake Yosemite.





Contact Us

2020 PROJECT ENVIRONMENTAL MITIGATION

Phil Woods
Director, Physical and Environmental Planning
(209) 349-2561
pwoods3@ucmerced.edu

2020 PROJECT

Abigail Rider
Assistant Vice Chancellor for Real Estate Services
arider@ucmerced.edu

Helpful Tools

ENVIRONMENTAL PLANNING RESOURCES

<http://opb.ucmerced.edu/environmentalplanning>

PHYSICAL PLANNING AND DESIGN RESOURCES

<http://opb.ucmerced.edu/planningdocuments>

Online Resources

DEPARTMENT OF PHYSICAL AND ENVIRONMENTAL PLANNING

Learn more about UC Merced's environmental and planning engagement work
<http://opb.ucmerced.edu/pep>

2020 PROJECT UPDATES

Learn more about UC Merced's campus expansion plans
<http://2020project.ucmerced.edu>

UC MERCED SUSTAINABILITY

Get involved with UC Merced sustainability
<https://sustainability.ucmerced.edu>

UC MERCED

Learn more about UC Merced's teaching, research and public service mission
<http://ucmerced.edu>



<http://opb.ucmerced.edu/pep>