



EXECUTIVE VICE PRESIDENT—
CHIEF FINANCIAL OFFICER

OFFICE OF THE PRESIDENT
1111 Franklin Street, 6th Floor
Oakland, California 94607-5200
510/987-9029

April 6, 2017

ACTION UNDER PRESIDENT'S AUTHORITY – APPROVAL OF LONG RANGE DEVELOPMENT PLAN AMENDMENT #8 FOLLOWING ACTION PURSUANT TO THE CALIFORNIA ENVIRONMENTAL QUALITY ACT, MERCED CAMPUS

EXECUTIVE SUMMARY

Campus Parkway is part of the County of Merced's future planned regional transportation network. This road alignment, which transects a portion of the Merced campus, had been reflected in maps within the 2009 Long Range Development Plan (LRDP) and 2013 LRDP Amendment (#6), but was omitted from the maps included in the 2016 LRDP Amendment (#7) for the Merced 2020 Project approved July 2016. The Campus Parkway road alignment is within the Campus Core, which has a *Campus Mixed Use* land use designation. This LRDP Amendment #8 (Amendment) corrects relevant LRDP maps to include the County's proposed future location of Campus Parkway, and makes minor text modifications to the *Campus Mixed Use* land use designation to clarify that permanent uses are not permitted within the Campus Parkway alignment. This Amendment does not constitute a material change in the LRDP. This Amendment is intended to make the LRDP consistent with the pre-2016 LRDP Amendment maps; the Merced County General Plan; and planned future regional transportation network.

RECOMMENDATION

It is recommended that, based upon review and consideration of the 2009 LRDP Environmental Impact Report, as updated in Addenda #6 and #7, the President:

1. Determine that amending the Merced Campus' 2016 LRDP Amendment maps to delineate the County of Merced's proposed future alignment of Campus Parkway does not conflict with or materially change the 2016 LRDP Amendment and that none of the conditions requiring further California Environmental Quality Act compliance are present.
2. Adopt the California Environmental Quality Act Findings in support of LRDP Amendment #8 (Attachment 1).
3. Amend the 2009 LRDP to show the delineation of the Campus Parkway road alignment on relevant LRDP maps (Attachment 2) and associated text revisions as conforming changes to the LRDP.

BACKGROUND

Campus Parkway is part of the future planned Merced County regional transportation network. The County has planned Campus Parkway as a four-lane expressway connecting UC Merced, the City of Merced, State Route 99 and State Route 140 (Attachment 3). The full buildout of Campus Parkway has been planned in multiple phases, for which UC Merced has contributed approximately \$750,000 for the first phase. UC Merced is obligated to fund its proportional share of future phases of Campus Parkway as set forth in the mitigation measures identified in the 2009 LRDP Environmental Impact Report (EIR) at the time the impacts occur and are not otherwise mitigated by the University. The future roadway segment to be located on UC land would be the final phase of the Campus Parkway, is not anticipated to be built within the time-horizon of the current LRDP, and is not needed to complete or mitigate traffic impacts from the Merced 2020 project.

In March 2009, the Regents approved the 2009 LRDP, which set forth a land use plan and principles for the development of a 25,000-student campus. The 2009 LRDP provided land use and circulation maps illustrating a transportation network that included Campus Parkway. The 2009 LRDP was subsequently amended in 2013 for the Merced 2020 Project (2013 Amendment), and the Campus Parkway road alignment was depicted on the land use and circulation maps adopted in 2013. In July 2016, the Regents approved LRDP Amendment #7 for the Merced 2020 Project (2016 LRDP Amendment). To allow for flexibility in the final design of the 2020 Project roads, the 2016 LRDP Amendment did not depict the Campus Parkway road alignment within the *Campus Mixed Use* area on the LRDP maps.

AUTHORITY TO APPROVE LRDP AMENDMENT #8

The requested action is to approve corrections to the LRDP maps (Attachment 2) and associated text revisions to include the Campus Parkway road alignment. The proposed Amendment preserves the fundamental planning principles of the 2009 LRDP as amended, and does not materially change its land use provisions for the site. Therefore the action qualifies as a minor LRDP amendment, which the President is authorized to approve under Regents Policy 8102. This action does not constitute design approval of the road in this exact location or budget approval for this future regional road improvement.

PROPOSED *CAMPUS MIXED USE* LAND USE DESIGNATION TEXT REVISIONS

The LRDP land use designation for this portion of campus is *Campus Mixed Use*. The Campus Parkway area is reserved for future transportation improvements (future roadway widening). The Merced 2020 Project does not locate permanent development in the Campus Parkway right of way. However, the *Campus Mixed Use* land use designation allows surface parking and landscaping in this area, which is not considered a permanent use.

The text for *Campus Mixed Use* land use designation (on page 52 of the LRDP) is proposed to be amended to correlate with the LRDP map revisions. The proposed text amendment is reflected in strikethrough and underline below:


“The *Campus Mixed Use* designation includes academic, research, student housing, student and support services, athletic and recreational facilities, administrative offices, service facilities, and parking. This category allows residential density up to 320 beds/gross acre. ~~The *Campus Mixed Use* also includes a transportation buffer for the future alignment of Campus Parkway. The *Campus Mixed Use* area also depicts the location of a future road alignment for the Campus Parkway along the east side of Lake Road that is intended to allow for future transportation improvements (future roadway widening). Permanent development is not allowed on the Campus Parkway right of way. Proposed development in this area will need to accommodate the alignment of future transportation improvements.~~”

ENVIRONMENTAL SUMMARY

The proposed LRDP Amendment #8 does not involve changes to the physical environment beyond those related to the overall implementation of the 2009 LRDP and the subsequent 2013 and 2016 Amendments for which environmental impacts were adequately analyzed in the certified 2009 LRDP Environmental Impact Report, as updated in Addenda #6 and #7 (2009 LRDP EIR). The 2009 LRDP EIR, a program EIR pursuant to section 15168 of the California Environmental Quality Act (CEQA) Guidelines, analyzes the overall effects of campus growth and facility development, and identifies measures to mitigate the significant adverse impacts and cumulative impacts associated with that growth.

None of the conditions described in CEQA Guidelines section 15162 has arisen such that the University would need to complete additional CEQA analysis through a subsequent EIR, supplement to the 2009 LRDP EIR, or addendum. Additionally, no changes or additions to the 2009 LRDP EIR are necessary. Therefore, the University has prepared findings to support the University's determination that the environmental impacts of the proposed LRDP Amendment #8 have been adequately analyzed in the 2009 LRDP EIR and that no further CEQA documentation is required. If approved, the campus will file a Notice of Determination with the State Clearinghouse.

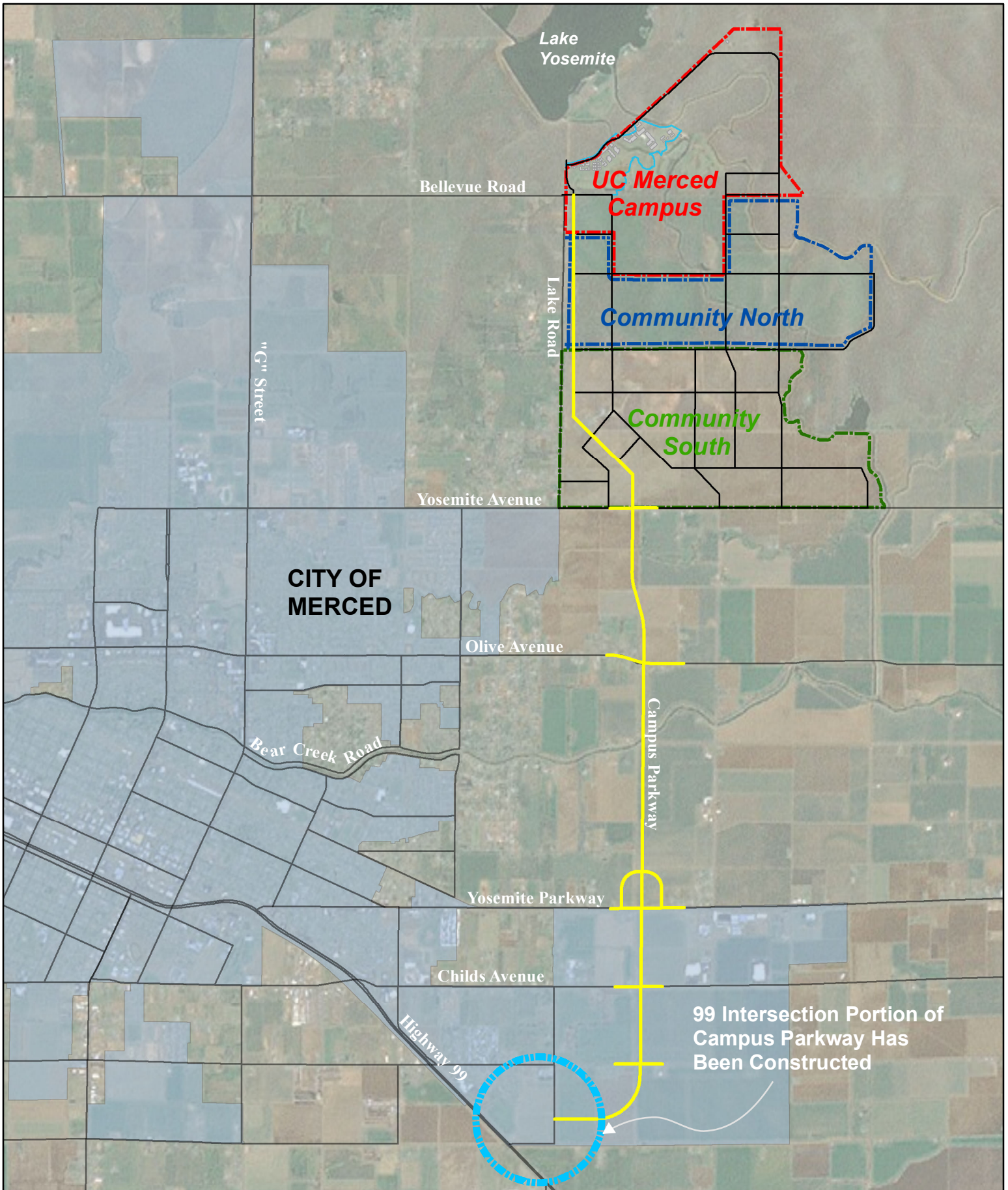
Approved



Janet Napolitano
President of the University

4-11-17
Date

- Attachment 1 – California Environmental Quality Act Findings
- Attachment 2 – Amended LRDP Maps
- Attachment 3 – Campus Parkway Location Map



Campus Parkway Location Map
Merced County
March 3, 2017



**CALIFORNIA ENVIRONMENTAL QUALITY ACT FINDINGS
IN CONNECTION WITH THE APPROVAL OF THE
UNIVERSITY OF CALIFORNIA, MERCED CAMPUS
2009 LONG RANGE DEVELOPMENT PLAN AMENDMENT #8**

**I. CONSIDERATION OF LRDP EIR AND ADDENDA #6 AND #7 FOR LRDP
AMENDMENT #8**

Pursuant to the California Environmental Quality Act, Public Resources Code Sections 21000 *et seq.* (“CEQA”) and the State CEQA Guidelines, Title 14, California Code of Regulations, Sections 15000 *et seq.* (“CEQA Guidelines”), the Board of Regents (“The Regents”) of the University of California, or its delegate (collectively referred to herein as the “University”), has considered the 2009 Long Range Development Plan Final Environmental Impact Statement/Environmental Impact Report (“Final EIS/EIR”) for the University of California, Merced (“UC Merced”) and the UC Merced 2020 Project (the “UCM 2020 Project”) EIR (State Clearinghouse No. 2008041009), as updated and amended by addenda #6 and #7 and adopts these findings (“Findings”) in support of Amendment #8 to the 2009 LRDP.

Amendment #8 will add revisions to the 2009 LRDP, as amended, to update LRDP maps to include the location of Merced County’s future Campus Parkway Road and to revise definition for the Campus Mixed Use Land Use designation (hereinafter referred to as the “Proposed Action”).

The University finds that the Proposed Action involves minor ministerial changes that do not require changes or additions to the previously certified EIR and Addenda #6 and #7 for the 2009 LRDP, as amended, and that there are no substantial changes in the LRDP, the circumstances under which the LRDP will be implemented, or new information that would necessitate the preparation of additional CEQA documentation. The University also finds that the Findings have been completed in compliance with CEQA and the CEQA Guidelines. The University further finds that the information contained in these Findings reflects the independent judgment and analysis of the University.

The certified 2009 LRDP Final EIR and Addenda #6 and #7 contain the environmental analysis and information necessary to support approval of the Proposed Action as set forth in Section III, below.

II. FINDINGS SUPPORTING APPROVAL OF THE PROPOSED ACTION

The University of California (“University”), as the lead agency pursuant to the California Environmental Quality Act (“CEQA”), certified the Final EIS/EIR for the 2009 UC Merced LRDP and the UC Merced 2020 Project (the “UCM 2020 Project”) (State Clearinghouse

No. 2008041009) in March 2009. The Regents also adopted Findings and a Statement of Overriding Considerations in connection with its approval of the 2009 LRDP.

The Final EIS/EIR consists of the November 2008 Draft Environmental Impact Statement/Environmental Impact Report (“Draft EIS/EIR”) and the March 2009 Final Environmental Impact Statement/Environmental Impact Report (“Final EIS/EIR”) (collectively the “2009 EIS/EIR”). Volumes 1 and 2 of the EIS/EIR assess the potential environmental effects of implementation of the 2009 LRDP and identify means to eliminate or reduce potential adverse impacts, and evaluate a reasonable range of alternatives to the 2009 LRDP. Volume 3 builds upon the broader programmatic analysis of campus development in EIS/EIR Volumes 1 and 2, and focuses on evaluating and disclosing environmental impacts that could potentially result if the development proposed as part of the UCM 2020 Project is implemented.

The 2009 LRDP is the land use planning document used by UC Merced to guide the development of the new campus to eventually support a projected student body of 25,000 full time equivalent students on up to 815 net acres of land in Merced County. UC Merced has completed the construction of the Phase 1 campus that provides adequate facilities for enrollment of up to 5,600 full- time equivalent (FTE) students.¹ The UCM 2020 Project, also referred to as Phase 2, comprises the second phase of campus development, with facilities needed to support an enrollment level of approximately 10,000 FTE students.

These facilities would include academic, administrative, research, and recreational buildings, student residences and student services buildings, utilities and infrastructure, outdoor recreation areas, and associated roadways, parking, and landscaping.

The following Findings are hereby adopted by the University as required by Public Resources Code Sections 21081.6 and CEQA Guidelines Sections 15091, 15092, 15162, 15164, and 15168 in conjunction with the approval of the Proposed Action, which is set forth in Section III, below.

A. Changed Circumstances, New Information and LRDP Project Scope

On the basis of the Proposed Action described above, the University has concluded, as set forth in Section B of these Findings, that the Proposed Action will not result in any new significant impacts or a substantial increase in the severity of previously identified significant impacts.

B. The Proposed Action Will Not Result in New Significant Effects on the Environment or a Substantial Increase in the Severity of a Previously Identified Significant Effect Shown in the Certified FEIR

Pursuant to CEQA Guidelines section 15162, no additional environmental review shall be required for a project unless the public agency with the next discretionary approval

determines, on the basis of substantial evidence in the light of the whole record, one or more of the following:

(1) Substantial changes are proposed in the project which will require major revisions of the previous EIR or negative declaration due to the involvement of new significant environmental effects or a substantial increase in the severity of previously identified significant effects;

(2) Substantial changes occur with respect to the circumstances under which the project is undertaken which will require major revisions of the previous EIR or Negative Declaration due to the involvement of new significant environmental effects or a substantial increase in the severity of previously identified significant effects; or

(3) New information of substantial importance, which was not known and could not have been known with the exercise of reasonable diligence at the time the previous EIR was certified as complete or the Negative Declaration was adopted, shows any of the following:

(A) The project will have one or more significant effects not discussed in the previous EIR or negative declaration;

(B) Significant effects previously examined will be substantially more severe than shown in the previous EIR;

(C) Mitigation measures or alternatives previously found not to be feasible would in fact be feasible, and would substantially reduce one or more significant effects of the project, but the project proponents decline to adopt the mitigation measure or alternative; or

(D) Mitigation measures or alternatives which are considerably different from those analyzed in the previous EIR would substantially reduce one or more significant effects on the environment, but the project proponents decline to adopt the mitigation measure or alternative.

If none of the conditions described in CEQA Guidelines Section 15162, above, are present, the University may determine that no further analysis is necessary.

The Proposed Action returns certain LRDP maps to include information as it was previously depicted in the approved 2009 LRDP. None of the conditions or circumstances that would require preparation of additional CEQA analysis exists in connection with the Proposed Action. No substantial changes have been proposed to the 2009 LRDP described in the 2009 Final EIR and addenda #6 and #7 that would

require major revisions. There have not been any substantial changes with respect to the circumstances under which implementation of the Proposed Action will take place that would require major revisions to the previously certified LRDP Final EIR. In addition, there is no new information of substantial importance, which was not known and could not have been known at the time that the LRDP Final EIR was certified, showing that new or more severe environmental impacts not addressed in the LRDP Final EIR will occur, that mitigation measures found infeasible in the LRDP Final EIR would in fact be feasible, or that different mitigation measures from those analyzed in the LRDP Final EIR would substantially reduce one or more significant impacts. No revisions or specific mitigation measures applicable to the Proposed Action were identified that would further reduce the impacts of implementation.

The certified LRDP Final EIR for the LRDP and UCM 2020 Project identified the potential for significant impacts related to Aesthetics, Air Quality, Biological Resources, Cultural Resources, Hazards and Hazardous Materials, Hydrology and Water Quality, Land Use and Planning, Noise, Population and Housing, Public Services, Recreation, Transportation and Circulation, Water Supply, Wastewater, and Other Utilities. Project impacts were determined to be reduced to less than significant levels with the inclusion of mitigation measures, except for certain impacts to Air Quality, Hazards and Hazardous Waste, Population and Housing, Public Services, Recreation, Transportation and Circulation, Wastewater, and Other Utilities, which were addressed through a statement of overriding considerations at the time of LRDP approval.

The certified LRDP Final EIR evaluates the Proposed Action in the context of the certified LRDP Final EIR for those resources that are potentially affected by the proposed changes: Aesthetics, Air Quality, Biological Resources, Cultural Resources, Hazards and Hazardous Materials, Hydrology and Water Quality, Land Use and Planning, Noise, Population and Housing, Public Services, Recreation, Transportation and Circulation, Water Supply, Wastewater, and Other Utilities.

The Proposed Action will not incrementally contribute to potentially significant cumulative impacts previously identified in the LRDP Final EIR associated with Project implementation, nor result in any new significant cumulative impacts, increase the severity of significant cumulative impacts previously identified in the LRDP Final EIR, or cause any environmental effects not previously examined in the LRDP Final EIR. The LRDP Final EIR examined all significant cumulative impacts to which implementation of the Project will contribute; these have been addressed in the LRDP Final EIR findings adopted by the University.

Each of the potential impact areas relevant to the Proposed Action is discussed separately below.

Aesthetics

Based on the analysis in the LRDP Final EIR and addenda #6 and #7, incorporated herein by reference, the University finds that the Proposed Action will not result in any new, significant aesthetics impacts that were not examined in the LRDP Final EIR and

addenda, that aesthetic impacts associated with implementation of the LRDP, as modified by the Proposed Action, will remain as previously identified, that the standards under CEQA are met for the Proposed Action, and that none of the circumstances that would require preparation of additional CEQA documentation exists.

Air Quality Impacts

Based on the analysis in the LRDP Final EIR and addenda #6 and #7, incorporated herein by reference, the University finds that the Proposed Action will not result in any new, significant air quality impacts that were not examined in the LRDP Final EIR and addenda #6 and #7, that air quality impacts associated with implementation of the LRDP, as modified by the Proposed Action, will remain as previously identified, that the standards for preparation under CEQA are met for the Proposed Action, and that none of the circumstances that would require preparation of additional CEQA documentation exists. Also no new mitigation measures were identified that would further lessen the significant and unavoidable air quality impact.

Biological Resources

Based on the analysis in the LRDP Final EIR and addenda #6 and #7, incorporated herein by reference, the University finds that the Proposed Action will not result in any new, significant biological impacts that were not examined in the LRDP Final EIR and addenda #6 and #7, that biological impacts associated with implementation of the LRDP, as modified by the Proposed Action, will remain as previously identified, that the standards under CEQA are met for the Proposed Action, and that none of the circumstances that would require preparation of additional CEQA documentation exists.

Cultural Resources

Based on the analysis in the LRDP Final EIR and addenda #6 and #7, incorporated herein by reference, the University finds that the Proposed Action will not result in any new, significant cultural resource impacts that were not examined in the LRDP Final EIR and addenda #6 and #7, that cultural resource impacts associated with implementation of the LRDP, as modified by the Proposed Action, will remain as previously identified, that the standards under CEQA are met for the Proposed Action, and that none of the circumstances that would require preparation of additional CEQA documentation exists.

Geology and Soils

Based on the analysis in the LRDP Final EIR and addenda #6 and #7, incorporated herein by reference, the University finds that the Proposed Action will not result in any new, significant geology and soils impacts that were not examined in the LRDP Final EIR and addenda #6 and #7 that geology and soils impacts associated with implementation of the LRDP, as modified by the Proposed Action, will remain as

previously identified, that the standards under CEQA are met for the Proposed Action, and that none of the circumstances that would require preparation of additional CEQA documentation exists.

Hazards and Hazardous Materials

Based on the analysis in the LRDP EIR and addenda #6 and #7, incorporated herein by reference, the University finds that the Proposed Action will not result in any new, significant hazards or hazardous materials impacts that were not examined in the LRDP Final EIR and addenda #6 and #7, that hazards and hazardous materials impacts associated with implementation of the LRDP, as modified by the Proposed Action, will remain as previously identified, that the standards under CEQA are met for the Proposed Action, and that none of the circumstances that would require preparation of additional CEQA documentation exists. Also no new mitigation measures were identified that would further lessen the significant and unavoidable hazards and hazardous materials impact.

Hydrology and Water Quality

Based on the analysis in the LRDP Final EIR and addenda #6 and #7, incorporated herein by reference, the University finds that the Proposed Action will not result in any new, significant hydrology and water quality impacts that were not examined in the LRDP Final EIR and addenda #6 and #7, that impacts to hydrology and water quality associated with implementation of the LRDP, as modified by the Proposed Action, will remain as previously identified, that the standards under CEQA are met for the Proposed Action, and that none of the circumstances that would require preparation of additional CEQA documentation exists.

Land Use and Planning

Based on the analysis in the LRDP Final EIR and addenda #6 and #7, incorporated herein by reference, the University finds that the Proposed Action will not result in any new, significant land use and planning impacts that were not examined in the LRDP Final EIR and addenda #6 and #7, that impacts to land use and planning associated with implementation of the LRDP, as modified by the Proposed Action, will remain as previously identified, that the standards under CEQA are met for the Proposed Action, and that none of the circumstances that would require preparation of additional CEQA documentation exists.

Noise

Based on the analysis in the LRDP Final EIR and addenda #6 and #7, incorporated herein by reference, the University finds that the Proposed Action will not result in any

new, significant noise impacts that were not examined in the LRDP Final EIR and addenda #6 and #7, that noise impacts associated with implementation of the LRDP, as modified by the Proposed Action, will remain as previously identified, that the standards under CEQA are met for the Proposed Action, and that none of the circumstances that would require preparation of additional CEQA documentation exists.

Population and Housing

Based on the analysis in the LRDP Final EIR and addenda #6 and #7, incorporated herein by reference, the University finds that the Proposed Action will not result in any new, significant population and housing impacts that were not examined in the LRDP Final EIR and addenda #6 and #7, that population and housing impacts associated with implementation of the LRDP, as modified by the Proposed Action, will remain as previously identified, that the standards under CEQA are met for the Proposed Action, and that none of the circumstances that would require preparation of additional CEQA documentation exists. Also no new mitigation measures were identified that would further lessen the significant and unavoidable population and housing impact.

Public Services

Based on the analysis in the LRDP Final EIR and addenda #6 and #7, incorporated herein by reference, the University finds that the Proposed Action will not result in any new, significant public services impacts that were not examined in the LRDP Final EIR and addenda #6 and #7, that public services impacts associated with implementation of the LRDP, as modified by the Proposed Action, will remain as previously identified, that the standards CEQA are met for the Proposed Action, and that none of the circumstances that would require preparation of additional CEQA documentation exists. Also no new mitigation measures were identified that would further lessen the significant and unavoidable public services impact.

Recreation

Based on the analysis in the LRDP Final EIR and addenda #6 and #7, incorporated herein by reference, the University finds that the Proposed Action will not result in any new, significant recreation impacts that were not examined in the LRDP Final EIR and addenda #6 and #7, that recreation impacts associated with implementation of the LRDP, as modified by the Proposed Action, will remain as previously identified, that the standards under CEQA are met for the Proposed Action, and that none of the circumstances that would require preparation of additional CEQA documentation exists. Also no new mitigation measures were identified that would further lessen the significant and unavoidable recreation impact.

Transportation and Circulation

Based on the analysis in the LRDP Final EIR and addenda #6 and #7, incorporated herein by reference, the University finds that the Proposed Action will not result in any new, significant traffic and transportation impacts that were not examined in the LRDP Final EIR and addenda #6 and #7, that traffic and transportation impacts associated with implementation of the LRDP, as modified by the Proposed Action, will remain as previously identified, that the standards under CEQA are met for the Proposed Action, and that none of the circumstances that would require preparation of additional CEQA documentation exists. Also no new mitigation measures were identified that would further lessen the significant and unavoidable traffic and transportation impact.

Water Supply

Based on the analysis in the LRDP Final EIR and addenda #6 and #7, incorporated herein by reference, the University finds that the Proposed Action will not result in any new, significant water supply impacts that were not examined in the LRDP Final EIR and addenda #6 and #7, that impacts to water supply associated with implementation of the LRDP, as modified by the Proposed Action, will remain as previously identified, that the standards under CEQA are met for the Proposed Action, and that none of the circumstances that would require preparation of additional CEQA documentation exists.

Wastewater

Based on the analysis in the LRDP Final EIR and addenda #6 and #7, incorporated herein by reference, the University finds that the Proposed Action will not result in any new, significant wastewater impacts that were not examined in the LRDP Final EIR and addenda #6 and #7, that wastewater impacts associated with implementation of the LRDP, as modified by the Proposed Action, will remain as previously identified, that the standards under CEQA are met for the Proposed Action, and that none of the circumstances that would require preparation of additional CEQA documentation exists. Also no new mitigation measures were identified that would further lessen the significant and unavoidable wastewater impact.

Other Utilities (Solid Waste, Gas, and Electricity)

Based on the analysis in the LRDP Final EIR and addenda #6 and #7, incorporated herein by reference, the University finds that the Proposed Action will not result in any new, significant utilities impacts that were not examined in the LRDP Final EIR and addenda #6 and #7, that utilities impacts associated with implementation of the LRDP, as modified by the Proposed Action, will remain as previously identified, that the standards under CEQA are met for the Proposed Action, and that none of the circumstances that would require preparation of additional CEQA documentation exists.

Also no new mitigation measures were identified that would further lessen the significant and unavoidable utilities impact.

C. Additional Findings

1. Adequacy of Prior Environmental Review

All of the potentially significant environmental effects of implementation of the 2009 LRDP, as reflected in the findings adopted by the University in September 2009, were adequately addressed at that time because: (1) changes or alterations were required in, or incorporated into, the LRDP which avoid or substantially lessen the significant environmental effect as identified in the LRDP Final EIR; (2) those changes or alterations are within the responsibility and jurisdiction of another public agency and not the University, and such changes have been adopted by such other agency or can and should be adopted by such other agency; or (3) specific economic, legal, social, technological, or other considerations, including provision of employment opportunities for highly trained workers, make infeasible the mitigation measures or Project alternatives identified in the LRDP Final EIR, despite the University's willingness to accept all feasible mitigation measures or alternatives. Impacts of 2009 LRDP implementation that remain significant and unavoidable after mitigation were addressed by the University in a statement of overriding considerations.

The Proposed Action is consistent in all respects with the original intent and goals of the LRDP. These Findings summarize, rely upon, and incorporate the analysis of the 2009 LRDP Final EIR and the findings adopted in support of the 2009 LRDP.

The Proposed Action is within the scope of the Project and does not implicate any of the conditions set forth in CEQA Section 21166 or CEQA Guidelines Sections 15162 or 15163 requiring the preparation of a subsequent EIR or negative declaration; a supplement to the 2009 LRDP Final EIR; or an addendum. No new significant environmental impacts have been identified in connection with the Proposed Action that were not considered in the LRDP Final EIR. The Proposed Action will not increase the severity of previously identified, potentially significant impacts. No mitigation measures or alternatives previously found infeasible would in fact be feasible and would substantially reduce one or more significant effects of the LRDP. No considerably different mitigation measures or alternatives are available that would substantially reduce one or more significant effects of the LRDP. As a result, no new environmental impacts are anticipated to occur, and no new mitigation measures will be required.

The potential environmental effects of the implementation of the Project, as amended by the Proposed Action, have been fully addressed by the LRDP Final EIR and associated findings. In accordance with CEQA Guidelines Section 15164, the University hereby finds that none of the circumstances described in Section 15162 of the CEQA Guidelines is present, and the Proposed Action does not otherwise provide an opportunity to eliminate or substantially reduce any of the significant and unavoidable adverse impacts of implementing the LRDP identified in the LRDP Final EIR. For these reasons, the University hereby finds that the LRDP Final EIR sufficiently analyzed the

environmental consequences of implementing the Proposed Action and reliance upon the original analysis is appropriate under CEQA, and no further CEQA review or documentation is required.

2. Incorporation by Reference

These Findings incorporate by reference in their entirety the text of the LRDP Final EIR and the findings adopted in support of the LRDP previously approved by the University. Without limitation, this incorporation is intended to elaborate on the scope and nature of the Proposed Action, its potential environmental impacts, and the basis for determining the significance of the Proposed Action's impacts.

3. Mitigation Monitoring and Reporting Program

CEQA requires the lead agency approving a project to adopt a mitigation monitoring and reporting program ("MMRP") for changes to the project that it adopts or makes a condition of project approval, including mitigation measures intended to eliminate or reduce potentially significant impacts of the project, in order to ensure compliance during project implementation. No new mitigation measures are required as part of the Proposed Action, which incorporates relevant and previously adopted LRDP Final EIR mitigation measures that will be monitored pursuant to the existing MMRP, which the University previously adopted in connection with its approval of the 2009 LRDP.

4. Record of Proceedings

Various documents and other materials constitute the record of proceedings upon which the University bases its Findings and decisions contained herein. Most documents related to this Proposed Action and the custodian of the administrative record are located at the UC Merced Office of Physical and Environmental Planning, Office of Planning and Budget, Merced, CA.

Summary

Based on the foregoing Findings and the information contained in the administrative record, the University makes the following findings with respect to the environmental effects of the Proposed Action:

1. The Proposed Action will not increase the severity of significant environmental impacts previously identified in the LRDP Final EIR and will not produce new potentially significant environmental impacts.
2. No mitigation measures or alternatives previously found infeasible or considerably different from those analyzed in the LRDP EIR would in fact be feasible and would substantially reduce one or more significant effects on the environment.

3. The implementation of all LRDP Final EIR mitigation measures relevant to the Proposed Action, as well as all components of the Proposed Action, is made a condition of approval.
4. All significant effects on the environment due to the implementation of the 2009 LRDP have been eliminated or substantially lessened where feasible through LRDP Final EIR mitigation measures and continuing best practices adopted in connection with the University's approval of the 2009 LRDP.

III. APPROVALS

Following an independent review and consideration of the LRDP Final EIR, the University hereby takes the following actions:

- A. Determine that the LRDP Final EIR adequately described and analyzed the project;
- B. Determine that no additional CEQA documentation is necessary;
- C. Adopt these Findings in their entirety, as set forth in Section II, above;
- D. Approve Amendment #8 to the 2009 LRDP for the University of California, Merced Campus.